

SPECTROLINE®  
NDT

# uVision™ Series

UV-A/White Light LED NDT Inspection Lamp  
Part No. UV-365ES; UV-365EH



**RoHS**  
Compliant



 **SPECTRO-UV**

6/22 AM17002ML-7  
PRINTED IN U.S.A.

1.800.561.8187

www.itm.com

information@itm.com

**⚠️ WARNING:**  
**UV light emitted from this product.**  
**Avoid eye and skin exposure to unshielded products.**

**FOR PROFESSIONAL EXAMINATION USE ONLY.**

**IMPORTANT SAFETY INSTRUCTIONS (Read all instructions)**

- Do not operate the uVision™ Series UV-A/White Light LED NDT Inspection Lamp (UV-365ES/UV-365EH) with a damaged cord or if the lamp has been physically damaged.
- Do not look directly into the light. **ALWAYS** wear the UV-absorbing protective glasses provided when operating the lamp. Use in low-light conditions to achieve the best inspection results. The darker the room, the greater the fluorescent contrast.
- The uVision™ is not approved for use in hazardous atmospheres. Do not attempt to use it in areas requiring explosion-proof lighting.
- Never use this equipment in any manner not specified in these instructions because your protection may be impaired.
- **NEVER** aim the lamp in the direction of another human being. **It is meant for professional fluorescent inspections ONLY!**
- **DO NOT** attempt to modify the lens assembly or light output. Doing so may alter the performance and intensity of the uVision™.

**OPERATION**

- The uVision™ series UV-A inspection lamps are equipped with an 8-foot (2.4 m) heavy-duty cord ending in an AC plug with a protective rubber boot.
- The lamp is shipped with the correct cord installed for the country of destination.
- Connect the plug to a power source that complies with the electrical requirements specified on the label.
- The lamp has a three-position rocker power switch (II – UV; O – off; I – white light) on the handle.
- **WARNING:** Be sure to use genuine uVision™ replacement parts. Using another manufacturer’s replacement parts could affect product performance and will void the warranty.



**DISASSEMBLING THE FILTER PROTECTOR FOR MAINTENANCE**

The outer rubber filter protector may be removed periodically to clean the Clear Borofloat Filter. To disassemble the filter protector, first remove the front rubber cover/filter holder (129301). Peel the rubber cover/filter holder toward the front portion of the lamp.

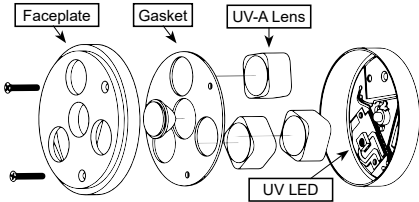


The Clear Borofloat Filter will remain inside the protector. To remove the Clear Borofloat Filter (130089), peel around the edge of the rubber cover/filter holder and push the filter out. To replace or reinsert the Clear Borofloat Filter into the rubber cover/filter holder, slide the Clear Borofloat Filter into the channel of the rubber cover/filter holder. Manipulate the rubber cover around the filter. Assure the filter is evenly seated.

**REPLACING THE UV LENSES**

The UV-A lenses (UL-110) covering the three UV-A LEDs must be replaced over time. They will solarize (become cloudy and yellow) from repeated use. To replace solarized lenses, remove screws from faceplate. Separate faceplate and gasket from lenses. Replace with new UV-A lenses (UL-110), ensuring they are centered in front of the three (3) UV LEDs on board. Re-attach gasket, faceplate, and screws.

See Replacement Parts section for part numbers and contact Customer Service for more details.



**MEASURING LAMP INTENSITY**

To ensure that your uVision™ series lamp is operating at the required UV intensity, it should be checked periodically. Spectro-UV offers a variety of sensors and meters. The AccuPRO™ XP-2000 combines the functionality of a UV and visible light radiometer/photometer, and is specially designed to measure UV irradiance with wavelengths of 320–400nm (with peak at 365nm) and visible light from 460–675nm (with peak at 555nm). Other suitable meters include the AccuMAX™ XRP-3000 radiometer/photometer kit, using dual-wavelength UV-A and VIS sensor detectors to accurately measure the irradiance of a light source. The AccuMAX™ XR-1000 digital readout unit with the XS-365 UV sensor or the DM-365XA digital readout unit can also be used for UV-A measurement. For more information about these units, please contact the Customer Service Department at Spectro-UV. Call toll-free 1-866-230-7305.

**ENVIRONMENTAL SPECIFICATIONS**

The uVision™ series lamps are designed to be safe under the following conditions:

- For Indoor/Outdoor Use (dustproof and protected against low pressure jets of water);
- Temperature 50°F to 122°F (5°C to 50°C);
- Mains supply voltage fluctuations not to exceed ±10% of the nominal voltage.

**LIMITED WARRANTY**

The warranty policy for the uVision™ lamp is provided on the Certificate of Limited Warranty enclosed separately with each unit. NOTE: For assistance of any kind, please contact the Customer Service Department at Spectro-UV. Provide the model, the serial number of the unit, and the date of purchase. The unit's serialization information is located (1) on the packaging the unit is shipped in, (2) engraved on the unit's handle, and (3) labeled on the reverse side of the unit's back plate.

**TECHNICAL SPECIFICATIONS**

uVision™ Series

**UV-365ES; UV-365EH**

Height  
Width  
Weight (with power supply)  
Light Source

UV-A (365nm) and white light  
7.5"  
3.5" x 4.25"  
2.35 lbs. (1,065 g)  
3 UV-A LEDs, 1 white light LED

**ELECTRICAL SPECIFICATIONS**

Input: 100-240V AC, 0.8A, 50/60 Hz  
Output: 12-15V DC, 2.1A



**POWER CORD SPECIFICATIONS AND PARTS**

LAMP PART NUMBER

UV-365ES; UV-365EH  
UV-365ES/F; UV-365EH/F  
UV-365ES/FA; UV-365EH/FA  
UV-365ES/FB; UV-365EH/FB

POWER REQUIREMENTS\*

100-120V/50-60Hz  
230V/50Hz  
220-240V/50Hz  
230V/50Hz

\*Each lamp is fitted with an 8-foot cord and the appropriate plug for the country of destination. An optional 20-foot cord is available. The "/20" suffix denotes the 20-foot power cord options.  
\*See next page for detailed power cord information.

**KEY FEATURES**

- **UV-365ES:** Nominal steady state intensity of 4,700 μW/cm² at 15 inches (38cm).
- **UV-365EH:** Nominal steady state intensity of 7,000 μW/cm² at 15 inches (38cm).
- Large 6-inch (15.2 cm) diameter coverage area at 15 inches (38 cm) with a minimum UV-A intensity of 1,200 μW/cm² for the UV-365ES, and a 7-inch (17.8 cm) diameter coverage area at 15 inches (38 cm) with a minimum UV-A intensity of 1,200 μW/cm² for the UV-365EH.
- Less than 1.0 foot-candle (11 lux) emission.
- Long-lasting UV-A lenses.
- Cool running, fanless design.
- White Light, LED Inspection Light.
- IP65 Rated: The uVision Series lamps are protected from total dust ingress and from low pressure jets of water (from all directions). For more details, consult EN 60529 (British BS EN 60529:1992, European IEC 60509:1989).

**POWER CORD INFORMATION**

LAMP	COUNTRY	VOLTAGE	CORD LENGTH	PART NUMBER
UV-365ES; UV-365EH	US	100-120	8'	130206
UV-365ES/F; UV-365EH/F	EU	230	8'	130207
UV-365ES/FA; UV-365EH/FA	AU	240	8'	130208
UV-365ES/FB; UV-365EH/FB	UK	230	8'	130209

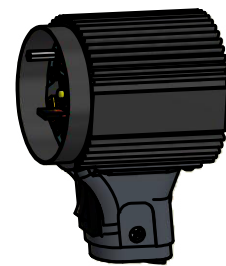
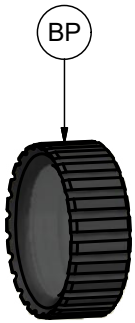
LAMP	COUNTRY	VOLTAGE	CORD LENGTH	PART NUMBER
UV-365ES/20; UV-365EH/20	US	100-120	20'	130210
UV-365ES/20/F; UV-365EH/20/F	EU	230	20'	130211
UV-365ES/20/FA; UV-365EH/20/FA	AU	240	20'	130212
UV-365ES/20/FB; UV-365EH/20/FB	UK	230	20'	130213

\*All power cords include the lower portion of the handle.

**REPLACEMENT PARTS**

BP	FP-600	BOROFLOAT FILTER PROTECTOR
1	UL-110	FACEPLATE, UNFILTERED
2	127955	GASKET, LENS
3	128385	LENS, UV-A
-	CC-370A	CARRYING CASE
-	UVS-30	SPECTACLES, UV-ABSORBING

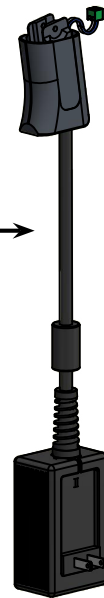
See exploded diagram on the following page.



6

**Power Cords**  
(Includes lower portion  
of the handle)

See *Power Cord Information* section for part numbers, voltages, cord lengths, and more.



7