



This quickstart guide covers preparation and use for the following models:

TRID30-7 and TRED30-7



1. SOFTWARE SETUP

Before using your LogTag®, you will need to download and install our freely available companion LogTag® Analyzer software. Please refer to our software page, fill in your details and begin your download.

Once it has finished downloading, install LogTag® Analyzer to your computer and start the program once it is installed. (For detailed software download and install instructions, please refer to the LogTag® Analyzer User Guide).



2. LOGTAG® CONFIGURATION

Next you will need an Interface Cradle connected to your computer. Once connected, your computer should automatically notify you that it has successfully installed the Cradle onto your computer. Please refer to the LogTag® Analyzer User Guide if you are having issues.

Please note: You only require 1 Interface Cradle for all non-USB LogTag® products. You can however, connect as many Cradles as you like if you wish to configure multiple loggers simultaneously.



“Standard Configuration”

With the Software running, the easiest way to configure your LogTag® for use is with the ‘LogTag Wizard’ which can be accessed by pressing the ‘F2’ key on your keyboard or you can browse via the top navigation menu: ‘LogTag’ > ‘Wizard’.

1 → User ID: Vaccine MAWB 119-896-66774

2 → Push button start (LogTag battery: OK)

3 → Enable pre-start logging

4 → Record readings continuously, overwrite oldest when memory full

5 → Record readings so that:

6 → Readings recorded will span at least 27 days

7 → Number of readings to record 7,777 (maximum is 7777)

8 → Record a reading every 5 Minutes

9 → Begin recording after a delay of 30 Minutes

10 → Trigger alarm when readings above/equal 8 °C

11 → After 120 Accumulative violation readings (10 Hours)

12 → Trigger alarm when readings below/equal -0.5 °C

13 → After 12 Accumulative violation readings (1 Hour)

14 → Configure requires a password

15 → Download requires a password

Advanced Options

< Back Next > Close Help

1. Provide a ‘Description’ to identify the logger being configured.
2. Select Push button or Time/Date start.
3. Enter the recording interval you wish to use. The duration of the shipment and/or number of readings to record changes according to the recording interval entered.
4. (Optional) Enter a start delay before the logger begins recording.
5. Specify the **upper** temperature alarm threshold.
6. (Optional) Require the **upper** alarm to trigger after a number of consecutive or accumulative readings instead of an instant alarm.
7. Specify the **lower** temperature alarm threshold.
8. (Optional) Require the **lower** alarm to trigger after a number of consecutive or accumulative readings instead of an instant alarm.
9. Optionally specify a password for next configure or download.

Advanced Configuration Options

Click **Advanced Settings** to view and change the loggers advanced features including the ‘Pause’ function, stopping and re-activation, clearing and preserving alarms, power save and temperature units displayed (°C or °F).



3. START / INSPECT

After configuration with LogTag® Analyzer for push button start the word **READY** is shown, together with the current time in 24 hour format. If you are using an External Sensor, ensure it is connected.

Press and hold the START button until the word STARTING is no longer flashing (approx 5 seconds).

If a delay has been configured, the logger will now display the time remaining. Once recording, the word **RECORDING** will be shown on the display.

During recording, the display shows the temperature of the last reading taken, the current time, battery status and a combination of alarm status and history. A reading is taken and the display updated every logging interval as configured in LogTag® Analyzer.

When you press the button, the next reading taken by the logger will be identified in the downloaded data with an inspection mark.

4. DOWNLOAD / RESULTS

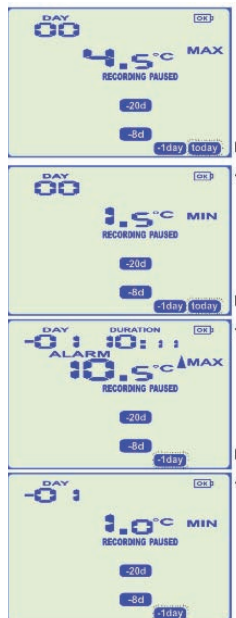
1. Open LogTag® Analyzer on the computer you wish to download the logger on.
2. Ensure an Interface Cradle is connected and insert the LogTag® into the Cradle.
3. If you have enabled automatic download in Edit > Options > Automation then LogTag® Analyzer will automatically download the readings from the Logger and display a temperature chart. To manually download the readings, Select "LogTag" > "Download" or alternatively press "F4" on your keyboard and follow on-screen instructions.

REVIEWING THE RESULTS

The logger will display up to 30 days of max/min/duration and alarm statistics.

To review the day statistics press the Review button. Each press of the button will step through the Max and Min temperatures for each day starting with today and moving backwards through the days (displayed day will flash).

Following are some examples.



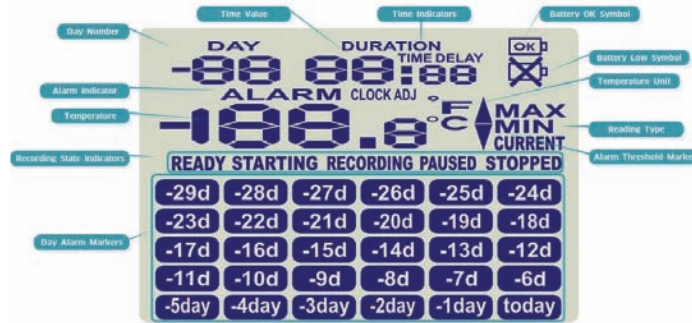
Pressing the Review button displays the current days' MAX statistic. The today segment flashes and DAY 00 is shown to indicate the 'Today' selection.

Pressing the Review button again displays the days' MIN statistic.

Pressing the Review button again displays the next previous days' MAX statistic. The MAX statistic in this example is above the upper limit and the ALARM was triggered for a duration of 10 hours and 11 minutes.

Pressing the Review button again displays the days' MIN statistic.

DISPLAY OVERVIEW



DAY ALARM MARKERS

This grid shows 5 rows of 6 markers, named Today to Day - 29, which are switched on when an alarm event occurred that day.

RECORDING STATE INDICATORS

The recording state indicators show if the logger is currently recording data.

- If the **READY** symbol is shown, the logger is ready to be started. Depending on the configuration it may already record pre-start readings.
- If the **STARTING** symbol is shown, the logger has been configured with a start delay. The word DELAY is also shown, together with the time in hours and minutes until the start.
- If the **RECORDING** symbol is shown, the logger is recording temperatures at the sample interval defined during configuration with LogTag® Analyzer.
- If **RECORDING** is shown together with the word **PAUSED**, the product is also recording, but the recorded values are not taken into account when calculating alarm events and durations.
- If the word **STOPPED** is shown, the logger has finished recording temperature data.

TEMPERATURE

This 4 character, 7- segment display shows the last recorded temperature whilst the logger is recording. Once the logger has stopped, nothing will be displayed.

ALARM INDICATOR

The **ALARM** symbol is shown as soon as the logger has registered an alarm event. If no alarms have been registered, or if an existing alarm has been cleared, the alarm symbol is not shown.

DAY NUMBER

During Review, this shows the day number of the currently displayed day statistic. Today is **00 DAY**, days in the past are represented between yesterday **-01 DAY** and **-29 DAY**.

During configuration of the logger in LogTag® Analyzer you can also enable this to show the total number of days on which data were collected while recording.

TIME VALUE AND TIME INDICATORS

The time value display is used to show one of the following:

- a clock with the current time,
- time remaining to start of logging with a delayed start or
- duration, for example of an alarm.

The time indicators identify, which of those is displayed:

- If the word **TIME** is shown, the time value represents the current time in hours and minutes (24- hour format).
- If the word **DELAY** is shown, the time value represents a start delay in hours and minutes.
- If the word **DURATION** is shown, the time value represents the length of time in hours and minutes an alarm threshold was exceeded, for example the time above the upper alarm threshold.

The word **5t r t** appears in place of a time value if the logger is configured for a date/time start, and the start time has not yet passed.

BATTERY OK/LOW CONDITION

An automatic battery test is performed hourly. The battery low symbol will appear if the loggers battery is low. If the battery OK symbol is shown, the battery is still OK.

TEMPERATURE UNITS

Depending on the selected display temperature units during configuration, this shows either °F or °C.

READING TYPE

The word **CURRENT** is shown when the temperature on the display represents the last recorded temperature.

The word **MAX** is shown in Review mode, when the temperature on the display represents the maximum recorded temperature for the day displayed.

The word **MIN** is shown in Review mode, when the temperature on the display represents the minimum recorded temperature for the day displayed.

ALARM THRESHOLD MARKERS

The up-arrow is shown when the temperature displayed (i.e. last recorded) is above the specified upper temperature threshold.

The down-arrow is shown when the temperature displayed is below the specified lower temperature threshold.