

# REED Model R1920

## Sound Level Meter, Compact Series


### Introduction

This compact sound level meter features Data Hold and Min/Max functions and is designed for one-handed operation.

#### ⚠ Warning:

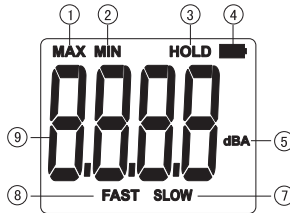
Before using the product, please read the operation manual carefully.

### Operation Safety

1. Check the meter before using to ensure the instrument is not damaged.
2. Do not open the meter.
3. When the LCD displays  replace battery as soon as possible.
4. Remove the batteries if the instrument will not be used for an extended period of time.
5. Do not use the meter in high temperature, humidity, flammable, combustible or strong electromagnetic environments.
6. Use a soft cloth and neutral detergent to clean the instrument. Do not use strong agents or solvents.

### Display Description

1. Max
2. Min
3. Data Hold
4. Low Battery Indicator
5. A weighted
6. Slow Response Rate
7. Fast Response Rate
8. Measurement Value



### Key Functions & Setup

#### ON/OFF

Press once to turn on unit. Press again to power off. Disable the product's auto power off feature by pressing and holding **HOLD** and then press the **ON/OFF** key to enable/disable auto power off, LCD will display "APO OFF" to indicate status.

#### FAST/SLOW

Sampling time: When measuring, press this button to toggle between fast time (125ms) and slow time (1s).

#### MAX/MIN

Press this button to cycle through maximum, minimum and live measurement functions. Select maximum and the maximum reading will be shown; select minimum and the minimum reading will be shown.

#### HOLD/BL

**HOLD:** Press the button once to hold the measurement and press it again to continue measuring.

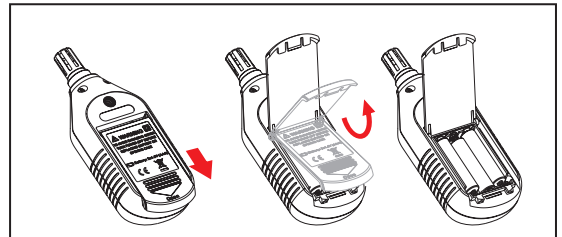
**BL:** Hold button to turn the backlight display on and off.

### Specifications

Measuring Range:	30 to 130dB
Accuracy:	±1.5dB
Resolution:	0.1dB
Display:	4-digit LCD
Backlit Display:	Yes
Time Weighting:	Fast/Slow (125mS and 1s)
Frequency Range:	31.5Hz to 8kHz
Frequency Weighting:	A
Microphone:	0.5" (12.7mm) electret condenser
Data Hold:	Yes
Maximum:	Yes
Minimum:	Yes
Over Range Indicator:	Yes
Auto Shut-Off:	Yes (after 5 minutes, off)
Low Battery Indicator:	Yes
Power Supply:	3 "AAA" batteries
Product Certifications:	CE
Storage Temperature:	14 to 140°F (-10 to 60°C)
Operating Humidity Range:	10 to 80%
Dimensions:	5.9 x 2 x 1.1" (150 x 52 x 27mm)
Weight:	4.1oz (116g)

### Battery Installation and Replacement

1. This meter uses 3 AAA batteries. Refer to the figure below for battery installation and replacement steps.
2. Push the battery cover open in the direction of the arrow, lift the cover and remove the batteries.
3. Install new batteries in accordance of polarity indications.
4. Close the cover tightly after installing new batteries.



For service or information on this or any other REED product, contact RFFD Instruments at [info@reedinstruments.com](mailto:info@reedinstruments.com).