

**STATIC PRESSURE METER & PROBE KIT**

**SPM-K1 (& SPM-100, PRB-KIT)**

The SPM-K1 is a compact, portable, wireless dual port manometer kit. When paired to a smart device running the CPS Link™ app, the SPM-K1 can measure and record static pressure, pressure differential, indoor/ outdoor pressure, system external static pressure, and gas pressure tests inside or outside residential and commercial buildings.

The SPM-K1 consists of the following components (packed together as a kit):

- SPM-100 (Dual Port Static Pressure Meter)
- PRB-KIT (Static Pressure Probe Kit and brass gas fitting)

The app generates professional reports which can be viewed and stored on a smart device running the CPS Link™ app. Reports can also be e-mailed to clients, a home office or others.

**SPM-K1 KEY FEATURES:**

- On screen guidance to accurately measure and record 5 different pressure tests
- Onscreen guidance for easy, accurate readings
- Durable, rubber encased manometer housing with magnetic back for hands-free operation
- Send professional detailed reports generated by the app to validate work performed
- Store client lists, job lists, logged data

**SPM-100 & PRB-KIT**

The SPM-100 and PRB-KIT are offered as stand-alone (replacement) products for use with the SPM-K1. The PRB-KIT may be used with other manometers that accept 1/8" (3.1 mm) I.D. and 1/4" (6.3 mm) O.D. tubing.



**SPM-100\***  
Static Pressure  
Meter

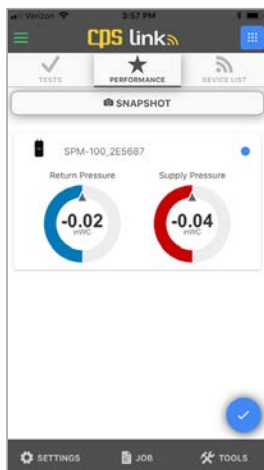


**PRB-KIT\***  
Static Pressure  
Probe Kit

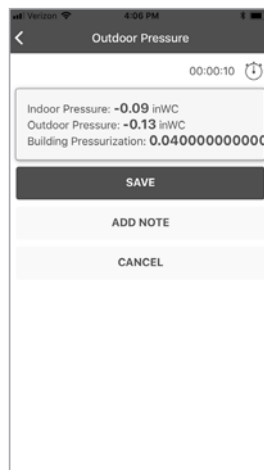
*\*An SPM-K1 consists of an SPM-100 manometer packed with PRB-KIT probes in a single storage case.*



Pressure Test  
Selection



Pressure Differential Test



Indoor Vs Outdoor  
Pressure Test

CPS reserves the right to make changes to, or discontinue any product or service identified in this publication without notice. CPS advises its customers to ensure they have obtained the latest and most current version of any relevant information before



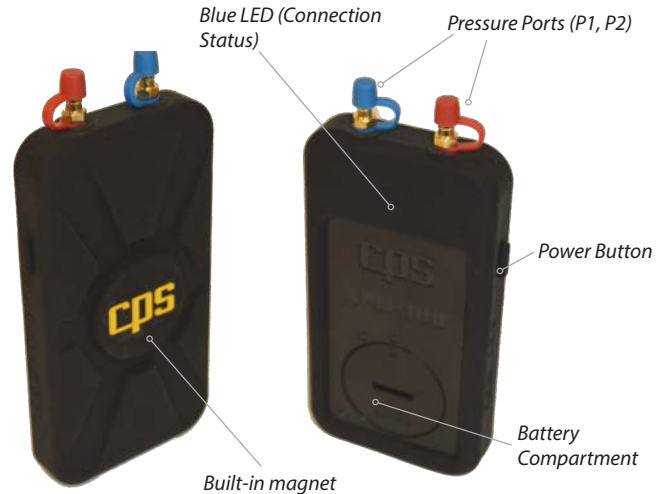
# SPM-K1, SPM-100 & PRB-KIT

## SPECIFICATIONS (SPM-100)

Wireless Connection Range	≤ 100 ft. (30.5m)
Wireless Communication	Bluetooth™
Operational temperature range	-40°F to +185°F (-40°C to +85°C)
Operational Temperature Range Full Accuracy	-32°F to +149°F (0°C to +65°C)
Absolute Accuracy	0 to 65°C (32 to 149°F): typical 0.04 inWC
Battery Type	3V CR 2450 Coin Cell Lithium Battery
Battery Life	>500 hrs.
Auto Power Off	30 seconds after closing or minimizing app, or no connection
Units of Measure	inWC, inHg, psi, mmWC, mmHg, Pa, kPa, mBar
Resolution	0.004 inWC
Pressure Range	±75 inWC
Dual Ports (For Rubber Tubing)	1/8" (mm) ID
Gas Manifold Fitting	Brass
Size (H x W x D)	5-1/8" x 2-5/8" x 7/8" (133 x 63 x 20 mm)
CPS Link™	Patented modular test and measurement system technology (US Patent No. 9,043,161)

## SPECIFICATIONS (PRB-KIT)

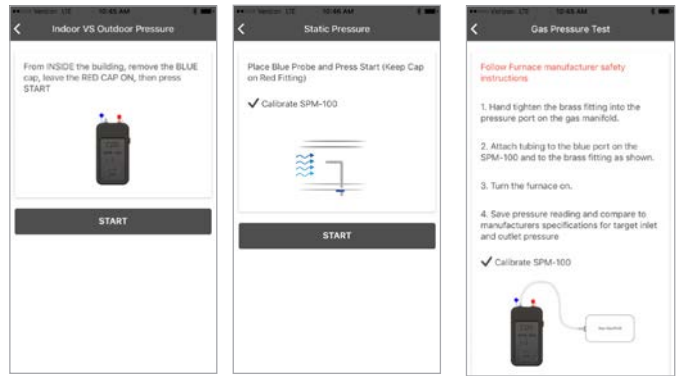
Rubber Tubes	Two, 6 ft (1.8 m), translucent
Probes	L shaped, stainless steel with color coded (red and blue) magnetic bases.
Warranty (All Items)	1 Year



SPM-100 (Back)

SPM-100 (Front)

## EASY ON SCREEN GUIDANCE TO SELECT AND PERFORM 5 DIFFERENT PRESSURE TESTS



Indoor/Outdoor Pressure

Static Pressure

Gas Pressure



SPM-K1 (Manometer + Probes)



PRB-KIT (Probes)



SPM-100 (Manometer)



### CPS LINK™ APP DOWNLOAD



All Apple iPhones 4S or newer & iPads Generation 3 or newer operating on iOS 7.0 or newer.



All Bluetooth Smart compatible Android phones & tablets with operating system 4.3 (Jelly Bean) or newer.



Pressure Differential



Total External Static Pressure

PACKAGING	CLAMSHELL OR COLOR BOX				INTERMEDIATE CARTON				MASTER CARTON			
	L x W x H	Weight	Meter Qty	Bar Code	L x W x H	Weight	Meter Qty	Bar Code	L x W x H	Weight	Meter Qty	Bar Code
SPM-K1	6.8" x 4" x 2" (17.3 x 10.2 x 5.08 cm)	1.06 lb (0.48 kg)	1	850470006091 SPM-K1	13.4" x 9.4" x 8" (34.04 x 23.9 x 20.3 cm)	13.56 lb (6.15 kg)	12	1085047006098 SPM-K1-C12	19.6" x 14" x 16.7" (49.78 x 35.6 x 42.4 cm)	54.90 lb (24.9 kg)	48	20850470006095 SPM-K1-MC48
PRB-KIT	6.7" x 4.1" x 2" (17.02 x 10.41 x 5.08 cm)	0.87 lb (0.39 kg)	1	850470006039 PRB-KIT	13.2" x 9.5" x 8" (33.5 x 24.1 x 20.3 cm)	10.56 lb (4.78 kg)	12	10850470006036 PRB-KIT-C12	19.5" x 14.5" x 16.6" (49.5 x 36.8 x 42.2 cm)	44.12 lb (20 kg)	48	20850470006033 PRB-KIT-MC48
SPM-100	6" x 3.2" x 1" (15.24 x 8.13 x 2.54 cm)	0.31 lb (0.14 kg)	1	850470006008 SPM-100	12.4" x 6.7" x 4" (31.5 x 17.02 x 10.2 cm)	4.31 lb (1.95 kg)	12	30850470006009 SPM-100-C12	14.2" x 14.5" x 10" (36.07 x 36.8 x 25.4 cm)	14.50 lb (6.58 kg)	48	40850470006006 SPM-100-MC48

Designed for use with APPLE® products. APPLE® is a registered trademark in the United States and other countries.

1.800.561.8187

www.itm.com

information@itm.com