

# PR2000 PRESSURE RECORDER W/LCD DISPLAY



## Features

- Large, backlit LCD display
- Front keypad w/lock feature
- Standard 1/4 in NPT fitting
- High speed download
- Real-time operation
- User-selectable measurement units
- Min./max. & average statistics
- Programmable start/stop time
- Convenient status indicators
- User replaceable batteries

## Applications

- Precision Pressure Recording
- HVAC
- Medical/Pharmaceutical
- Environmental studies
- Replace costly strip chart recorders
- Geothermal

The PR2000 is a battery powered pressure recorder, with an LCD display. It is perfect for applications requiring display pressure readings and a logger.

The 8-button keypad and large LCD provide convenient access to current data and recorder setup. Additionally, memory and battery levels, external power status, and sampling and recording status are shown on the LCD.

Available on-screen data includes: statistics (min, max, average); recording status (start, stop and recording rate); display options (units, text size); and calibration information (date calibrated, date for recalibration). Statistics can be cleared at any time during logging.

With 262,143 readings, the PR2000 has one of the largest memory capacities of any similar data recorder on the market. The non-volatile memory will retain recorded data, even if battery power is lost.

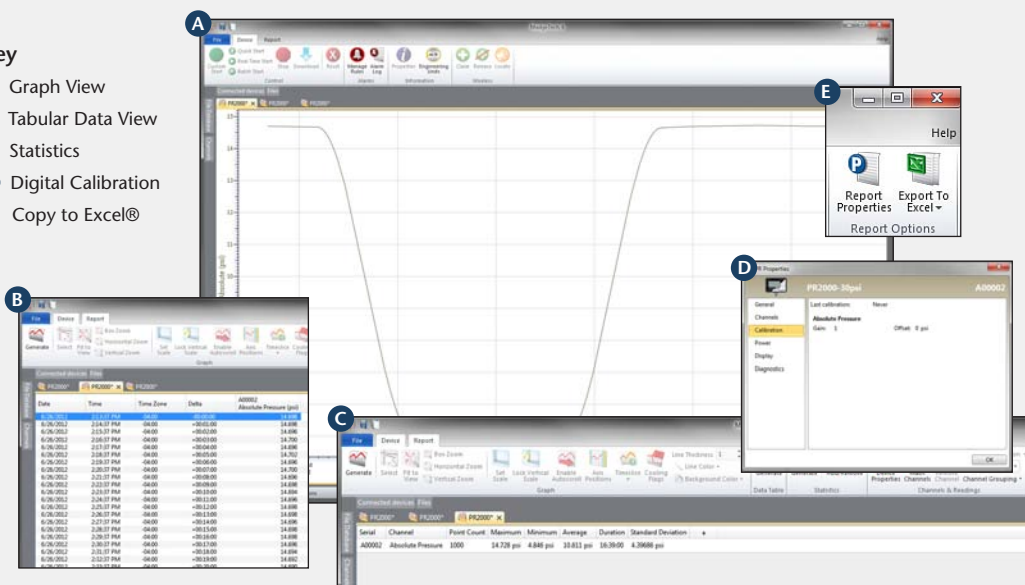
A calibration certificate is available for users needing to meet regulatory requirements. Creating permanent records, performing data calculations, and the graphing of data is quick and easy: Simply connect the interface cable to an available USB port and, with a few clicks of the mouse, data is downloaded and ready for review or export to Excel®.



## MADGETECH DATA LOGGER SOFTWARE

### Key

- A** Graph View
- B** Tabular Data View
- C** Statistics
- D** Digital Calibration
- E** Copy to Excel®



### Software Features:

- Multiple graph overlay
- Statistics
- Digital calibration
- Zoom in/ zoom out
- Lethality equations (F0, PU)
- Mean Kinetic Temperature
- Full time zone support
- Data annotation
- Min./Max./Average lines
- Data table view
- Automatic report generation
- Summary view
- Multilingual

# PR2000 SPECIFICATIONS\*

## Pressure

<b>Pressure Sensor:</b>	Semiconductor strain gauge
<b>Pressure Range:</b>	0 to 30, 100, 300 and 500 PSIA/G; 0 to 1000 and 5000 PSIA
<b>Pressure Resolution:</b>	0.002, 0.005, 0.02, 0.05 PSIA/G; 0.05, 0.2 PSIA
<b>Calibrated Accuracy:</b>	2 % FSR, 0.25 % @ 25 °C typical
<b>Pressure Response Time:</b>	0.1 ms (10 to 90 % FSR)

## DOT-MATRIX LCD

<b>Dimensions:</b>	2.5 in x 1.375 in (63 mm x 35 mm)
<b>Text:</b>	Configurable channel text size
<b>Indicators:</b>	Power, status, memory
<b>Backlight:</b>	Configurable w/auto shut-off and contrast adjustment
<b>Start/Stop Time:</b>	Software programmable start time and date, up to six months in advance; programmable stop time
<b>Memory:</b>	262,143 total readings; software configurable memory wrap

<b>Reading Rate:</b>	1 reading every 2 seconds up to 1 reading every 24 hours
<b>Calibration:</b>	Digital calibration through software
<b>Calibration Date:</b>	Automatically recorded within device
<b>Battery Type:</b>	6 alkaline AA batteries, <b>user replaceable</b>
<b>Battery Life:</b>	1 year battery life at 1 minute reading rate with display off. 30 days typical with continuous display use. Optional AC adapter available.
<b>Data Format:</b>	PSIG, inHg, mmHg, bar, atm, Torr, Pa, kPa, MPa
<b>Time Accuracy:</b>	±1 minute/month (at 20 °C to 30 °C)
<b>Computer Interface:</b>	USB (interface cable required); 115,200 baud
<b>Software:</b>	XP SP3/Vista/Windows 7/Windows 8
<b>Operating Environment:</b>	-20 °C to +60 °C, 0 %RH to 95 %RH non-condensing
<b>Dimensions:</b>	5.1 in x 4.8 in x 1.705 (130 mm x 122 mm x 43.3 mm)
<b>Weight:</b>	40 oz (1134 g)
<b>Enclosure:</b>	Black anodized aluminum case/NPT Steel
<b>Approvals:</b>	CE

**BATTERY WARNING:** RISK OF FIRE OR EXPLOSION. DO NOT RECHARGE, FORCE OPEN, HEAT OR DISPOSE OF IN FIRE.

# ORDERING INFORMATION

MODEL	DESCRIPTION
PR2000-30	0-30PSIA(G) Pressure Recorder with LCD Display
PR2000-100	0-100PSIA(G) Pressure Recorder with LCD Display
PR2000-300	0-300PSIA(G) Pressure Recorder with LCD Display
PR2000-500	0-500PSIA(G) Pressure Recorder with LCD Display
PR2000-1000	0-1000PSIA Pressure Recorder with LCD Display
PR2000-5000	0-5000PSIA Pressure Recorder with LCD Display
Calibration Certificate	Calibration Certificate available for data logger
IFC200	Software, manual and USB interface cable
MN1500	Replacement battery for PR2000 (device requires 6 batteries)

**ASK ABOUT OUR OTHER DATA LOGGERS**

- Temperature
- Humidity
- Pressure
- pH
- Level
- Shock
- LCD Display
- Pulse/Event/State
- Current
- Voltage
- Wireless
- Intrinsically Safe
- Spectral Vibration
- Motion