



BALL PROBE MOISTURE METER WITH BLUETOOTH®

FLIR MR59™

The MR59 is an affordable pinless meter for professionals in moisture remediation, pest control, home or building inspection, and floor installation. It is a high-quality, reliable, and easy-to-use moisture-detection tool. Wireless connectivity makes it easy to view readings on a mobile device from the FLIR Tools® Mobile app when the meter's display is out of view. Thanks to the ball-probe sensor, the user can cover a large area in a short time without making a mark; measure into corners, over uneven surfaces, and around baseboards; and detect problems below the surface. The MR59 is a reliable standalone meter—or a useful accessory to pair with a FLIR thermal imager.



LOCATE HIDDEN MOISTURE EFFICIENTLY

Survey large areas quickly and non-destructively

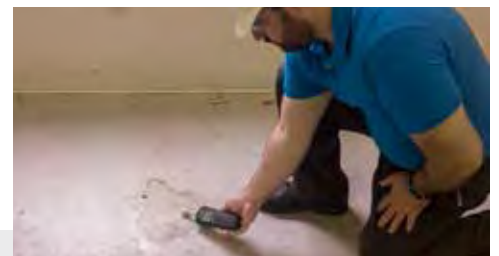
- Easily run the meter over and around objects on the measuring surface with the ball-probe sensor
- Create a heat map of the affected area and follow the migration path to a hidden source of moisture
- Identify potential moisture problems up to 100 mm (4 in) below the surface



INSPECT ANYWHERE WITH EASE

Designed to make your job easier and more efficient

- Wirelessly connect the meter to FLIR Tools Mobile to view readings on a mobile device
- Work in dim lighting with the backlit display and bright worklight
- Use with the MR04 extension pole to reduce the need for a ladder, or to optimize ergonomics for 'high' and 'low' measuring targets (accessory not included)



RELY ON THIS METER TO GET THE JOB DONE

Take the durable, drop-tested meter to every job

- Detect moisture in a wide range of common building materials
- Receive stable, repeatable readings. The meter's handgrip is designed to prevent hands from interfering with measurements
- Take advantage of product enhancements by upgrading firmware as needed via micro USB port (located in battery compartment)

SPECIFICATIONS

Moisture Measurement	Range	Accuracy
Moisture	0 - 100%	Relative measurement
Measurement Detection Depth	Up to 100 mm (4 in) depending upon material under test	
General Information		
Connectivity	Bluetooth BLE Communications Protocol: METERLINK®	
Worklight	White LED	
Display	Backlit, multifunction LCD	
Measurement Principle	Capacitive (non-invasive)	
Warranty	Limited 3 years	
Battery Type	9 V battery	
Battery Life	Typical 40 hours without worklight	
Battery Status Indicator	4-bar battery icon (100% to empty)	
Auto Power Off (APO)	After 30 minutes	
Operating RH/Temperature	90%, 0°C to 30°C (32°F to 86°F)	
	75%, 30°C to 40°C (86°F to 104°F)	
	45%, 40°C to 50°C (104°F to 122°F)	
IP Rating	IP40	
Safety Compliance	CE, RCM, FCC/IC	
Drop Test	2 m (6.6 ft)	
Housing Material	Impact-resistant plastic	
Weight	245 g (8.6 oz)	
Dimensions	240.5 x 67 x 38 mm (9.5 x 2.6 x 1.5 in)	



The World's Sixth Sense®