

# LEAKAGE CURRENT TESTER



The GLC-9000, leakage current tester, is used to perform leakage current (or called touch current) tests on medical electrical (IEC 60601-1) and general purpose electric & electronic (IEC 60990) equipment. This tester engages with nine measurement networks (or called Measuring Device) to provide the simulation of human body whilst the EUT (equipment under test) is taking a leakage current testing, in compliance with the specific standards or regulations such as IEC, UL, JIS...etc..

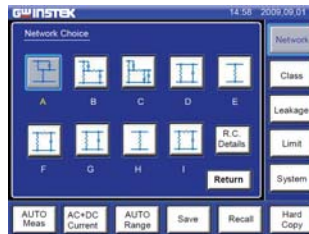
In order to provide a simple operation environment, the GLC-9000 equips large TFT LCD touch panel to configure system as well as to present the measurement settings information and result simultaneously. Besides, there are 50 preset testing conditions, which conform to IEC60990 and other standards, for general electric equipment can be recalled to reduce the setting time. In addition, 30 sets empty memory are available for user defined.

A Meter mode is also available for the GLC-9000, it uses the measurement terminal (T1/T2) to measure voltage as the same way of ordinary voltmeter. During the voltage measurement, the SELV function (safety extra low voltage) is applicable to detect the voltage value between measuring points whether exceeding the SELV setting.



### Simple and Intuitive System

The color TFT touch screen makes operation intuitive and simple, whilst making it easier to observe test result.



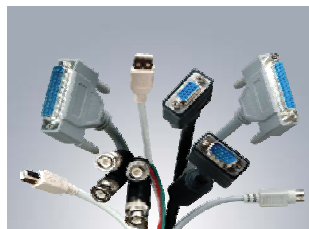
### Various Measurement Network

Nine Measurement Network are available for measuring the leakage current of electrical and medical equipment.

Standard No.	Applicable Electrical Equipment
IEC60950	Information Technology Equipment
IEC60335	Household and Similar Electrical Appliances
IEC60065	Audio, Video and Similar Electrical Appliances
IEC60745	Hand-held Motor-Operated Electric Tools
IEC60598	Luminaires
IEC61010	Electrical Equipment for Measurement, Control, and Laboratory Use

### Preset Test Conditions

50 preset standard test conditions conforming to IEC 60990 for general electric equipment. Additional 30 sets empty memory for user defined



### Various Standard Interfaces

The various practical interfaces are equipped as standard making control convenient and flexible.

## GLC-9000

### FEATURES

- Suitable for Medical Electrical & General Electrical of Leakage Current Measurement
- Touch Panel with Color LCD Display
- 9 Different Measurement Network to Simulate the Resistance of Human Body
- 50 Sets Preset Test Conditions Conform to the IEC 60990 ; 30 Sets Memories for Customer Defined
- 8 Different Types of Leakage Current for General Electrical & Medical Equipment
- Meter Function with SELV/CONV Function
- Upper & Lower Limitation for PASS/FAIL Judgment
- Various Leakage Current Measuring Mode : DC/AC/AC+DC/AC Peak
- Various Standard Interfaces : RS-232/ GPIB/USB Host & Device/EXT I/O



Front



Rear Panel

### APPLICATIONS

- Production Testing of Medical Equipments
- Research & Design
- Quality Assurance Verification



**GW INSTEK**

information@itm.com

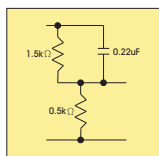
1.800.561.8187

www.itm.com

## MEASUREMENT NETWORK (MD)

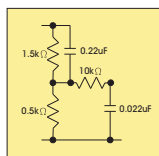
### MD-A

For: IEC60990/60995



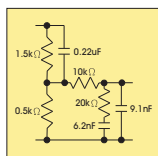
### MD-B

For: IEC60990/60950



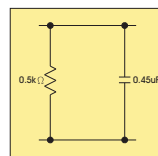
### MD-C

For: IEC60990/60598



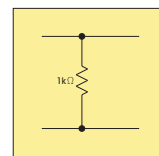
### MD-D

For: IEC60335-1/UL1563



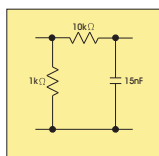
### MD-E

For: JIS B8561/UL2601-1



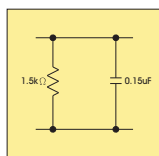
### MD-F

For: IEC60601-1/UL2601-1



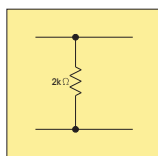
### MD-G

For: UL554NP/1310



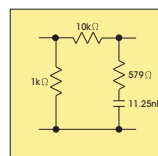
### MD-H

For: general application



### MD-I

For: JIS B8561/UL554NP



Note 1. The standard numbers that are listed are only example. 2. The networks listed can be used with all applicable standards.

## SPECIFICATIONS

	Ranges	Range	Resolution	Accuracy
<b>DC</b>	25.00mA	5.00mA ~ 25.00mA	10μA	±(0.2%rdg+3dgt)
	5.000mA	0.500mA ~ 5.000mA	1μA	±(0.2%rdg+3dgt)
	500.0μA	50.0μA ~ 500.0μA	0.1μA	±1.0%fs
	50.00μA	4.00μA ~ 50.00μA	0.01μA	±1.0%fs
<b>AC or AC+DC</b>	25.00mA	5.00mA ~ 25.00mA	10μA	10Hz<f≤100kHz ±(2.0%rdg+6dgt)
	5.000mA	0.500mA ~ 5.000mA	1μA	100kHz<f≤1MHz ±(2.0%rdg+10dgt)
	500.0μA	50.0μA ~ 500.0μA	0.1μA	±(2.0%rdg+6dgt)
	50.00μA	4.00μA ~ 50.00μA	0.01μA	±(2.0%rdg+6dgt) ±2.0%fs
<b>AC PEAK</b>	75.0mA	10.0mA ~ 25.0mA	100μA	20Hz<f≤1kHz ±(2.0%rdg+2dgt)
	10.00mA	1.00mA ~ 10.00mA	10μA	1kHz<f≤10kHz ±(5.0%rdg+10dgt)
	1.000mA	500μA ~ 1.000mA	1μA	±(2.0%rdg+2dgt)
	500.0μA	40.0μA ~ 500.0μA	0.1μA	±2.5%fs ±4.0%fs
<b>EUT Voltage</b>	300V	85V ~ 300V	0.1V	±(2%rdg+10dgt)
	10A	0.5A ~ 10A	0.1A	±(2%rdg+5dgt)
<b>METER MODE</b>	AC/DC	10.0 ~ 300.0V	0.1V	±(3%rdg+2V)
	AC+DC	10.0 ~ 300.0V	0.1V	±(3%rdg+2V)
	AC Peak	15.0 ~ 430.0V	0.1V	±(3%rdg+2V)
<b>INTERFACE</b>	RS-232, GPIB, USB Host & Device, EXT I/O			
<b>POWER SOURCE</b>	For GLC-9000 : AC 100V/120V/220V/230V±10%, 50/60Hz For EUT : AC 85V ~ 250V, 50/60Hz			
<b>DIMENSIONS &amp; WEIGHT</b>	330 (W) x 150 (H) x 350 (D) mm; Approx. 5kg			

Specifications subject to change without notice.

LC-9000GD1DH

## ORDERING INFORMATION

**GLC-9000** Leakage Current Tester

## STANDARD ACCESSORIES

User manual x 1, Alligator clips x 4 (Red x 2/Black x 2)  
Test lead (GTL-117) x 2, Foil probe x 1, Power cord x 2

Global Headquarters

**GOOD WILL INSTRUMENT CO., LTD.**

No. 7-1, Jhongsing Road, Tucheng City, Taipei County 236, Taiwan  
T +886-2-2268-0389 F +886-2-2268-0639  
E-mail: marketing@goodwill.com.tw

China Subsidiary

**GOOD WILL INSTRUMENT (SUZHOU) CO., LTD.**

NO. 69, Lushan Road, Snd, Suzhou Jiangsu 215011 China  
T +86-512-6661-7177 F +86-512-6661-7277  
E-mail: marketing@instek.com.cn

Malaysia Subsidiary

**GOOD WILL INSTRUMENT (M) SDN. BHD.**

73, Jalan Medan Putra 1, Medan Putra Business Park, 47810, Cyberjaya, Selangor, Malaysia

U.S.A. Subsidiary

**INSTEK AMERICA CORP.**

3661 Walnut Avenue Chino, CA 91710, U.S.A.  
T +1-909-5918358 F +1-909-5912280  
E-mail: sales@instekamerica.com

Japan Subsidiary

**INSTEK JAPAN CORPORATION**

4F, Prosper Bldg, 1-3-3 Iwamoto-Cho Chiyoda-Ku,  
Tokyo 101-0032 Japan  
T +81-3-5823-5656 F +81-3-5823-5655  
E-mail: info@instek.co.jp

Korea Subsidiary

**GOOD WILL INSTRUMENT KOREA CO., LTD.**

200, Seongnam 1-Dong, Seongnam-Si, Gyeonggi-Do, Korea

**GW INSTEK**

Made to Measure Since 1975

[www.gwinstek.com](http://www.gwinstek.com)

**Simply Reliable**  
Our low TCO helps you control costs

1.800.561.8187

[www.itm.com](http://www.itm.com)

[information@itm.com](mailto:information@itm.com)