



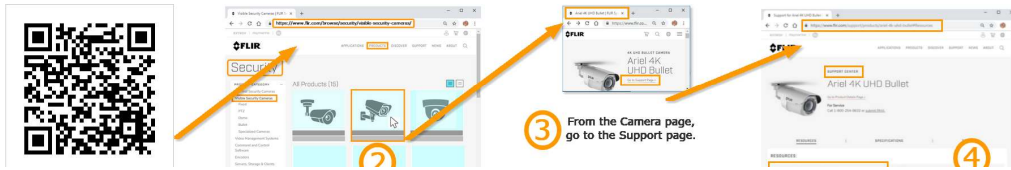
**TELEDYNE
FLIR**

Quick Install Guide

**Quasar Gen III
CP-6302-31-P**

Indoor/Outdoor 30x HD PTZ IP Camera

Accessing Camera Documentation and Utility Software from the Web



A. (Optional) Insert SD Card

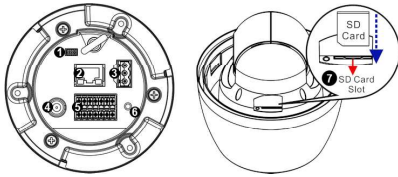
To locally store snapshots or video recordings triggered by events, insert an SD card or a microSDXC card (up to 1TB, Class 10) with adapter (not supplied) in the SD card slot inside the camera housing (see diagram below).

B. Mount the Camera

Verify that the operating temperature range is between -40°C ~ 50°C (-40°F ~ 122°F) up to 55°C (131°F) with IR LEDs off, 0-90% relative humidity (non-condensing).

Be sure to have the required accessories and tools available. Refer to the Installation Manual for mounting instructions.

C. Connect the Camera



3-Pin Power Connector

Power Connector	Pin	24 VAC	30 VDC
L 1	1	L (Live; white; positive)	Pins 1 and 3 (polarity N/A)
N 2	2	Ground (Earth)	
N 3	3	N (Neutral; black; negative)	

CAUTION:

This product contains a battery that is soldered to the PCB. There is a risk of explosion if the battery is replaced by an incorrect type. Do not replace the battery. The battery should be disposed of in accordance with manufacturer's instructions.

Terminal Connectors

14-pin Terminal Block	Pin	Definition	Pin	Definition
	1	Audio-Out	9	Alarm-In 4
	2	Ground (Audio I/O)	10	Alarm-In 3
	3	Alarm-Out A1	11	Alarm-In 2
	4	Alarm-Out A2	12	Alarm-In 1
	5	Alarm-Out B1	13	Ground (Alarm I/O and RS-485)
	6	Alarm-Out B2	14	Audio-In
	7	RS-485 D+		
	8	RS-485 D-		

1. Console connector (technician).
2. Cat 5e/Cat 6 cable from the switch to the RJ45 connector for 10/100/1000 Mbps Ethernet and PoE+. If using a PoE injector, use CP-POE-4P-60W-US or equivalent. Verify that there are steady green and flashing yellow LEDs. If using a Universal PoE-capable network switch, use a Teledyne FLIR-recommended unit. Consult Support.
3. Three-pin power connector (if using a 24VAC / 30VDC power supply or a heater).
4. Analog video output to a DVR (attach coax cable to the BNC connector).
5. 14-pin terminal block connector for alarm and audio in/out (attach wires from external devices).
6. Factory reset button (to reset factory defaults at any time, press the Default button for at least 20 seconds).
7. SD card slot.

D. Discover the Camera


1. Download and install the DNA Utility from the Teledyne FLIR website as shown.
2. Attach the unit to the same LAN segment as the computer that is managing the unit. DNA automatically discovers the unit on the network and displays the device's current IP address in the Discover List.

Configure the Camera's IP address and Video Format

1. Select the unit from the Discover List.
2. If using static IP addressing (as on a Latitude system), follow the DNA instructions to set the desired IP address.
3. On a system using DHCP, select the DHCP option in DNA.

4. To select PAL or NTSC, select the device in the Discover List, right-click to open the context menu, and select **Change Video Format**.
5. Click **Update**.

E. (Optional) Install the ActiveX Plug-in

 The camera's web interface supports Microsoft Internet Explorer® 10 and higher (32-bit) with the ActiveX® plug-in, Google Chrome®, Mozilla Firefox®, and Microsoft Edge®. When using Internet Explorer, make sure that ActiveX controls can be downloaded by configuring the ActiveX controls and plug-in settings, or by setting the Internet Security Level to the Default level. For further details, refer to the camera's User Guide.

To configure ActiveX:

1. Start Internet Explorer.
2. Select **Tools > Internet Options** from the main menu of the browser.
3. Select the **Security** tab and click **Internet**.
4. Click Custom level to change ActiveX settings.
5. Set all ActiveX controls and plug-ins settings to Prompt or Enable.


To set the Internet Security Level:

1. Start Internet Explorer.
2. Select **Tools > Internet Options** from the main menu of the browser.
3. Select the **Security** tab and click **Internet**.
4. Click **Default level**.
5. Click **OK**.
6. Close and reopen the browser window.

7. After the request to install the ActiveX control file (install.cab) appears on the screen, click **Yes**.
8. After installing the plug-in, in the pop-up security warning that opens, click **Install** to start downloading the Quasar Player software onto the PC.
9. Click **Finish** when the Quasar Player installation is completed.

F. (Optional) Format SD Card

1. Use the Web interface to verify that the card status is displayed as Mounted on the **System > Edge Recording > SD Card** screen.
2. Format the card.
3. Configure the camera to store snapshots and recordings from the **System > Edge Recording** screens.

 When logging in to the camera's Web interface for the first time:

1. Log into the unit with the administrator user name *Admin* and the default password *1234*.
 2. Specify a new password for the administrator and then log back in using the new password.
- For details, refer to the camera's User Guide.

G. Attach to VMS

Once you have completed installation and setup and found the current IP address with DNA, use your VMS Discovery/Attach procedures to attach the camera to your VMS.



CP-6302-31-P_QIG_v7

! : -