



# Quick Install Guide

## Ariel Gen III CM-3304/CM-3308

4MP/8MP Minidome IP Camera

### A. Use this QR Code to access the FLIR Website

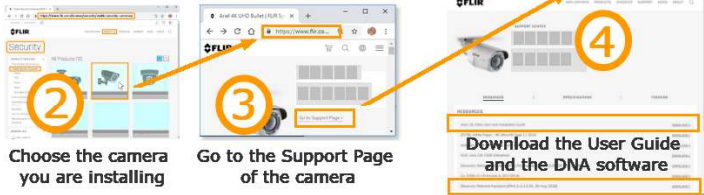


### What's in the Box

Item	CM-3304	CM-3308
CM-330x Minidome Camera	1pc	1pc
Tapping Screw s (TP4 25mm)	2pcs	2pcs
Tapping Screw s (TP4 32mm)	2pcs	2pcs
M4 Screw (25mm)	2pcs	2pcs
Plastic anchors	2pcs	2pcs
T20 Torx w rench	1pc	1pc
Drill template	1pc	1pc
Water proof cap	1pc	1pc
Desiccants	1pc	1pc
Desiccants QIG	1pc	1pc
X type bracket	1pc	1pc
Quick Installation Guide	1pc	1pc

### B. Download Camera Documentation and Utility Software from the Web

1 Use the QR code to go to the Web page



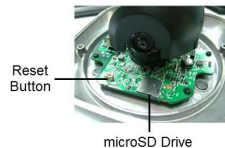
Example - CM-3308-11

### C. Install the SD Card if required

The camera is shipped without a microSDXC card. A card must be inserted in the camera in order to locally store a snapshot or recording triggered by an event.

#### To install a microSDXC card:

1. Lift the rubber tab on each side of the dome cover and, using a Torx screwdriver, remove the dome cover from the camera body.
2. Insert a microSDXC card (Min 4GB, up to 128GB, Class 10) in the card drive on the camera's printed circuit board.
3. Discard the Desiccant pack that was in the camera, and replace with a new pack that was separately supplied. (See 'What's in the Box'.)
4. Replace the dome cover.



#### After the camera is connected,

1. Verify that the card status is displayed as mounted in the **System > Events Handler > SD Card** screen.
2. Format the card. The card must be formatted as a single partition.
3. Configure the camera to store snapshots and recordings from the **System > Events Source** screens.

## D. Mount and Position the Camera

Be sure to have the required accessories and tools available. Refer to the User Guide as necessary.

1. Verify that the operating temperature range is between -40°C ~ 50°C (-40° ~ 122°F), 0-90% relative humidity (non-condensing).
2. Mount the camera at the site according to your surveillance requirements.
3. Refer to the **User Installation Guide** for detailed instructions how to install the camera and attach it to the site surface.

### After connecting the camera:

1. Set the camera angle and height based on the required Field of View depth and topology.
2. Click the Lens Control button on the Live screen.
3. Set the zoom and focus on the Lens Control screen.



## E. Connect the camera

1. Use the RJ-45 socket to attach the camera to the VMS via a PoE 10/100 Mbps network switch (or use a PoE injector if connecting to a regular switch.)
2. Connect Inputs and Outputs if required (see table below)

No.	Function	Identify	No.	Function	Identify
1	RJ-45	Network (/PoE+)			
2	Audio IN	White	4	Com	Blue
	Gnd	Gray		Alarm OUT	Green
3	Audio OUT	Purple	5	Gnd	Light Blue
	Gnd	Yellow		Alarm IN	Light Green

## F. Discover the Camera

### Use DNA to access the camera default parameters

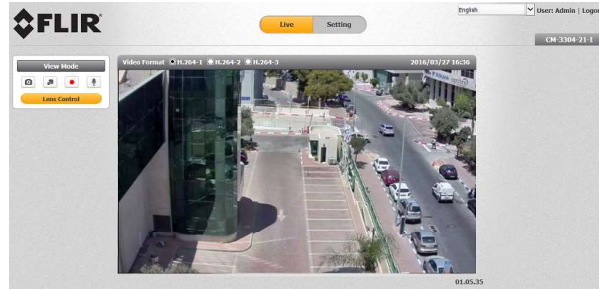
1. Download and install the DNA Utility, following the **DNA Application User Guide/Help** screens.
2. Attach the unit to the same LAN segment as the computer that is managing the unit. DNA automatically discovers the unit on the network and displays the device's current IP address in the Discover list.
3. Select the unit from the **Discover List**.

### Set the Camera's IP address and Video Format

4. If using a Static IP address (as on a Latitude System), follow the DNA instructions to set the desired IP address.
5. On a system using DHCP, select the DHCP option in DNA.
6. To select PAL or NTSC, select the device in the Discover list, right-click to open the context menu and click **Change Video Format**.
5. Click **Update**.



The camera's web interface can be accessed by Internet Explorer 10 and higher (32-bit) with the ActiveX plug-in and by browsers that do not require ActiveX, such as Microsoft Edge, Chrome or Firefox, on PCs running 64-bit Windows 7, 8, 8.1, or 10.



Camera Web Interface

## G. Basic Video Analytics License

If Basic Video Analytics is to be used on this camera, then a camera license must be generated and loaded to the camera. See Basic Video Analytics Camera License in the User and Installation Guide.

## H. Attach to VMS

1. Use your VMS Discovery procedures to discover and attach the camera to your VMS.
2. Use VMS camera setup or camera Web Page access to verify camera orientation, video settings, and focus. If required, use camera web page to format SD card and set up SoE parameters



The World's Sixth Sense™ CM-3304/CM-3308 QIGv 2