



Quick Install Guide

Ariel Gen II

CC-3103

Corner IP Camera

A. What's in the Box

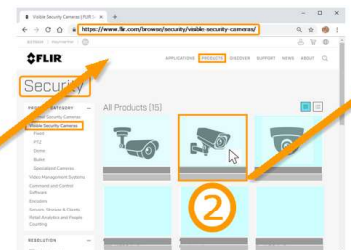
Quantity	Description
1	CC-3103 corner camera
1	Bag containing six screws and six plastic anchors
1	T20 Torx wrench
2	Desiccants
1	CC-3103 Desiccants User Guide
1	CC-3103 Quick Install Guide



B. Accessing Camera Documentation and Utility Software from the Web



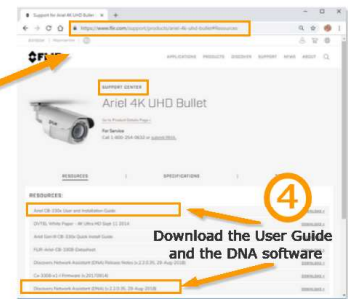
Use the QR code to go to



On the web page, go to Products/Visible Security Cameras, and pick the camera you are using

3

From the Camera page, go to the Support page.



Download the User Guide and the DNA software

C. Insert and Configure the microSD Card

A microSDXC card (not supplied) must be inserted in the camera in order to locally store a snapshot or recording triggered by an event. The microSDXC card drive is located on a printed circuit board inside the camera housing.

To install a microSDXC card:

1. After removing the camera's cover, insert a microSDXC card (up to 128GB, Class 10) in the card drive.
2. Be sure that a new desiccant is inserted inside the enclosure.
3. Replace the cover and screw the enclosure shut.

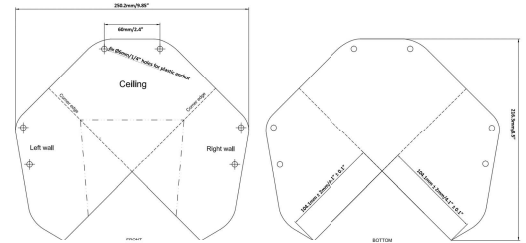


microSD card slot

D. Install the camera

1. Verify that the operating temperature range is between $-40^{\circ}\text{C} \sim 50^{\circ}\text{C}$ ($-40^{\circ} \sim 122^{\circ}\text{F}$), 0-90% relative humidity (non-condensing).
2. Position the camera at the site according to your surveillance requirements.
3. Remove the protective plastic covering over the camera body.
4. Using the provided template, mark the drill locations on the ceiling and wall.
5. Drill a hole in the ceiling to insert the system cable, and drill holes into the surfaces for the screws.
6. Hammer the screw anchors into place.
7. Attach the system cable to the network switch.
8. Align the screw holes on the camera body with the markings on the surface.
9. Using the electric screwdriver, screw the camera body into the surfaces.
10. Replace the protective covering over the camera's electronics, and attach the safety lanyard from the base unit to the cover.
11. Using the Torx wrench, screw the camera cover over the camera body.

The CC-3103 camera is designed to be mounted against the ceiling and two walls in the corner of a room. Be sure to have the required accessories and tools available. See the User Guide for more detail.



E. Connect the camera

1. Insert a cable in the RJ45 connector to attach to the network switch for a 10/100 Mbps Ethernet and POE connection.
Note: This camera must be connected to a PoE source.
2. Connect the Audio-IN and Alarm-IN connectors

Note:

If an ITE PoE injector is used, it should be connected only to a PoE network inside a building and not routed outside the building.



#	Color	Description
1	Purple	Alarm-In
	Yellow	Ground
2	White	Alarm-Out
	Grey	COM
3	Green	Ground
	Blue	Audio-Out
4	Black	RJ-45

F. Discover the Camera

The camera's web interface can be accessed by Internet Explorer 10 and higher (32-bit) with the ActiveX plug-in and by browsers that do not require ActiveX, such as Microsoft Edge, Chrome or Firefox, on PCs running 64-bit Windows 7, 8, 8.1, or 10.

Set the Camera's IP address and Video Format

1. Download and install the DNA Utility from the FLIR website as shown above
2. Attach the unit to the same LAN segment as the computer that is managing the unit. DNA automatically discovers the unit on the network and displays the device's current IP address in the Discover List.
3. Select the unit from the Discover List.
4. If using a Static IP address (as on a Latitude System), follow the DNA instructions to set the desired IP address.
5. On a system using DHCP, select the DHCP option in DNA.
6. To select PAL or NTSC, select the device in the Discover list, right-click to open the context menu and clicking *Change Video Format*.
5. Click Update.

G: If using Storage on the Edge

1. Use the Web interface to verify that the card status is displayed as **Mounted** in the System > Events Handler > SD Card screen.
2. Format the card.
3. Configure the camera to store snapshots and recordings from the System > Events Source screens.

H. Attach to VMS

Once you have completed installation and setup and found the current IP address with DNA, use your VMS Discovery/Attach procedures to attach the camera to your VMS.

