

B50000 Series Digital Pressure Gauges

- Compatible with air, liquids & gases
- 4-digit LCD display with backlight provides clear reading
- 304 Stainless Steel wetted materials and housing
- Pressure progress bar graph display
- Push-button zero



Specifications

| | |
|----------------------|-----------------------------------|
| Accuracy: | 1% F.S. |
| Long-term Stability: | 0.5% F.S./Year |
| Sampling Rate: | 3x/Sec. |
| Overload Capacity: | <1500PSI: 150%, ≥1500PSI: 120% |

Medium & Materials

| | |
|--------------------|----------------------------|
| Service: | Liquids & compatible gases |
| Wetted Materials: | 304 SS |
| Housing Materials: | 304 SS |

General Specifications

| | |
|------------------------|---------------|
| Process Connection: | 1/4" male NPT |
| Display: | 4-digit LCD |
| Backlit Display: | Yes |
| Low Battery Indicator: | Yes |

General Specifications (continued)

| | |
|--------------------------------|---|
| Power Supply: | 2 x AAA Batteries |
| Battery Life: | 12-18 months |
| Product Certifications: | IP64 |
| Electromagnetic Compatibility: | EN61326 |
| Operating Temp.: | 23 to 104°F (-5 to 40°C) |
| Dimensions: | Outside Diameter: 2.56" Depth: 1.50" |
| Weight: | 8.82oz (250g) |

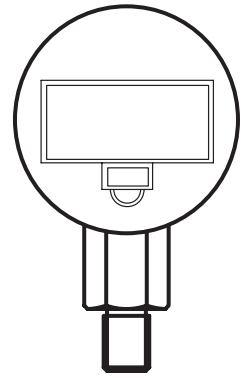
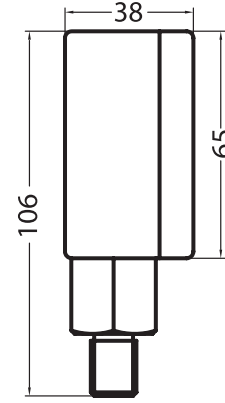
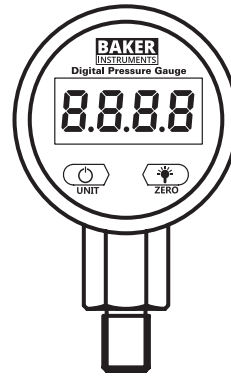
continued...



GlobalTestSupply.com/Baker



ITM.com/Baker



| Model | B50015 | B50030 | B50100 | B50500 | B51000 | B53000 |
|-------------------------|---|--|---|--|---|--|
| Measuring Ranges | 0-15.00 psi 0-1.055 kgf/cm ² 0-30.5 inHg 0-103.4 kPa 0-416 in w.c. 0-1034 mbar 0-0.103 MPa | 0-30.0 psi 0-2.109 kgf/cm ² 0-61.1 inHg 0-206.8 kPa 0-831 in w.c. 0-2068 mbar 0-0.206 MPa | 0-100.0 psi 0-7.03 kgf/cm ² 0-203.6 inHg 0-690 kPa 0-0.689 MPa | 0-500 psi 0-35.2 kgf/cm ² 0-1018 inHg 0-3.45 MPa | 0-1000 psi 0-70.3 kgf/cm ² 0-2036 inHg 0-6.89 MPa | 0-3000 psi 0-210.9 kgf/cm ² 0-20.68 MPa |
| Resolution | 0.01 psi 0.001 kgf/cm ² 0.1 inHg 0.1 kPa 1 in w.c. 1 mbar 0.001 MPa | 0.1 psi 0.001 kgf/cm ² 0.1 inHg 0.1 kPa 1 in w.c. 1 mbar 0.001 MPa | 0.1 psi 0.01 kgf/cm ² 0.1 inHg 1 kPa 0.001 MPa | 1 psi 0.1 kgf/cm ² 1 inHg 0.01 MPa | 1 psi 0.1 kgf/cm ² 1 inHg 0.01 MPa | 1 psi 0.1 kgf/cm ² 0.01 MPa |



Optional Protective Rubber Boot

Model B5-BOOT

Increase shock resistance with this optional protective boot. Compatible with all models from this series of pressure gauges.



| Model | Description |
|-------------|---|
| B50015 | Digital Pressure Gauge, 0-15 psi |
| B50015-NIST | Digital Pressure Gauge, 0-15 psi & NIST |
| B50030 | Digital Pressure Gauge, 0-30 psi |
| B50030-NIST | Digital Pressure Gauge, 0-30 psi & NIST |
| B50100 | Digital Pressure Gauge, 0-100 psi |
| B50100-NIST | Digital Pressure Gauge, 0-100 psi & NIST |
| B50500 | Digital Pressure Gauge, 0-500 psi |
| B50500-NIST | Digital Pressure Gauge, 0-500 psi & NIST |
| B51000 | Digital Pressure Gauge, 0-1000 psi |
| B51000-NIST | Digital Pressure Gauge, 0-1000 psi & NIST |
| B53000 | Digital Pressure Gauge, 0-3000 psi |
| B53000-NIST | Digital Pressure Gauge, 0-3000 psi & NIST |
| B5-BOOT | Protective Rubber Boot |



GlobalTestSupply.com/Baker



ITM.com/Baker