



TEMPEST Tic 4.3X NFPA

High Resolution Thermal imaging camera



Efficient and versatile = 3 buttons + 4" display

Particularly suitable for the First attack. LEADER TIC 4.3X offers unbeatable value and best quality, combined with all important features: ideal for firefighting, first attack, search for missing persons and fire...



Outstanding features:

- Compact 7.09 x 6.02 x 4.13 inches
- Lightweight 2.25 lbs with 2 batteries.
- Large 4" display for detailed visibility
- Widest detection range: -40°F to +2100°F
- Video recording, picture capture and image freeze
- Batteries: 6 year warranty, 5000 charging cycles
- Safe batteries (LiFePO4): for high temp operations
- Up to 8h running time (2 batteries) with integrated Eco-Boost-System
- Germanium window to protect the optics
- Removable Pistol grip option
- Boot time: less than 5 sec
- 3 Large buttons: easy to operate even with gloves

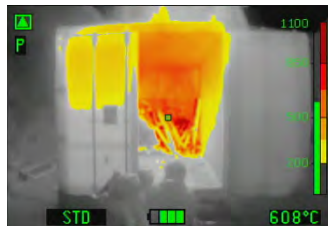


NFPA 1801:2018

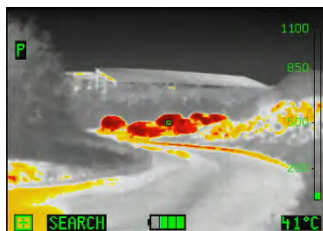


Color schemes:

Tempest TIC 4.3X offers 3 color schemes as standard: Fire, Search, and Inverse
+2 color schemes as option: Cold Finder and Multicolor



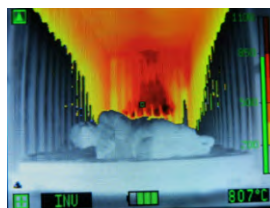
STD / FIRE:
 Dark Red >1560°F
 Red > 1250°F
 Orange > 930°F
 Dark Yellow >660°F
 Yellow > 400°F
 White = Hot
 Black = Cold



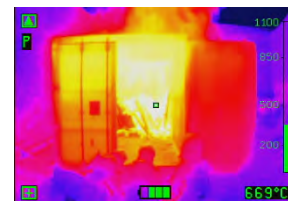
SEARCH:
 2 hottest % colored in Red
 and the 5 following hottest %
 in Yellow-Orange.



COLD Finder:
 Blue color
 for coldest
 areas



INVERSE:
 Same as Fire
 scheme but
 White & Black
 are inverted:
 White = Cold
 Black = Hot



MULTICOLOR:
 For Industrial
 applications

3 Sensitivity modes with automatic switch according observed scene:

- High sensitivity temperature range: -40 +300°F
- Medium sensitivity temperature range: -40 + 950°F
- Low sensitivity temperature range: -40 +2100°F

TEMPEST

1.800.561.8187

www.itm.com

information@itm.com

Characteristics:

Leader TIC 4.3X with Eco-Boost-System	
Dimensions	L7.09 x W6.02 x H4.13 inches (H = +4.33" with optional pistol grip)
Weight	2.25 lbs with 2 batt / 2.06 lbs with 1 batt (+0.37 lbs with optional pistol grip)
Display	4" LCD / 320 x 240 (76.800) px / Backlighting / Brightness: 800 cd/m ²
Frequency	60Hz Fps
T°C Range	-40° to +2100°F
Colorization	Std: Fire, Search, Inverse Option: Cold finder and Multicolor
Housing	
Material	PUR / Elastomer housing with silicone boot around display
Drop Test	6.5ft on concrete
IP	IP67 / 3.2ft Meter 30 Minutes
Heat resistance	300°F for 15min / 500°F for 5min
Sensor	
Micro bolometer type	Uncooled 17μ Amorphous Silicon aSi Resolution 384 x 288 (110 592 px)
Spectral range	7 – 14 μm
Thermal sensitivity	NETD: <50mK (<0.05°C)
Optic	
Material	Germanium Carbon Coated Protected by a germanium window
Focus	1.15ft to infinity / F/1.3 speed
Visual field / FOV	H: 51° / V: 40° / Diagonal: 65°

General	
Rechargeable batteries	LiFePO ₄ (Lithium Iron Phosphate = safety VS fire), 2.5Ah at 6.6V, 0.19lbs
Running time (20°C) with Eco-Boost- System since October 2018	Without video/photo functions: >8h (2 batt) / >4h (1 batt) With video/photo functions: >6h (2 batt) with non-active video >5h (2 batt) with recording video
Boot time	< 5 seconds
Charging voltage	12-24 VDC or 100-240 VAC
Charging time (for 2 batt / half for 1 batt)	Charging bay: ~1h30 Mains charger: 100% in ~2h, 90% in ~1h30, 80% in ~1h20
Charging cycles	> 5000
Memory (optional)	8GB internal SD card (8h video or 1000 pics)
Warranty	5 years on camera / 6 years on batteries / 10 years on thermal sensor / 1 year on accessories (chargers, charging bay, etc...)
Certifications	NFPA1801:2018 and ISA12.12.01 / CSA C22.2 N°213 and CE
Options	
Removable pistol grip	Picture capture and/or video recording (8GB capacity)
Neck strap in flame retardant material	Vehicle charging bay or mains charger
1 or 2 Retractable lanyards	Carrying case IP67
Protection hood	Wireless video transmission to computer, tablet or smartphone



Energy concept

LiFePO₄ batteries (lithium-iron-phosphate).

Benefits:

- Very long lifespan guaranteed 5000 charging cycles (~10 years)
- Operating time (8h with 2 batteries at the same time in the camera)

Picture capture & Video recording

Pictures (up to 1000) and Video (up to 8h) can be:



- Viewed on the camera screen during operation
- Live Pictures can be sent to a computer, tablet or smartphone thanks to optional wireless stick.
- Downloaded into a computer via a USB cable



Vehicle Charging Bay

Very space-saving mountable!
Power supply 12/24 VDC or 100-240 VAC. Can charge up to 4 batteries at the same time (2 in the camera and 2 spares)



Camera standard features:

Description	Color modes			Features								
	Color modes	Optional color modes	Max color modes	Battery	Freeze mode	Side trap	Video recording	Picture capture	Laser	Zoom	USB cable	
LEADER TIC 4.3X	Fire & Search & Inverse	Multicolor or Cold	5	2	√	No, but available attachment points for zippers and/or neck strap					√	
LEADER TIC 4.3X L			5	2	√				√	√		
LEADER TIC 4.3X V			5	2	√		√	√		√	√	√
LEADER TIC 4.3X VL			5	2	√		√	√	√	√	√	√

V= Video + Picture
L = Laser

Camera optional accessories:

	Wireless Transmission kit (to come)	Only compatible with cameras equipped with Video recording		Vehicle charging bay with additional slots	Charge batteries in the camera + 2 extra spare batteries
	Pack of 2 spare batteries			Power supply for charging bay	Exist in 12/24V and 100V-240V with US or EU plug
	Cable charger	Available in 12/24V or 100V-240V		Retractable lanyard	1.1 lbs or 2.2 lbs tension force
	Watertight Carrying case	IP67		Neck strap	Fire-proof (Kevlar)
	Vehicle charging bay	Charge batteries inside the camera		Protection hood (to come)	Increases exposure time x2 to high temperatures



Laser pointer

Only for 3.3 and 4.3 models



Removable pistol grip

Pistol grip = 0.37 lbs
Incl. mounting tool

