



# TEMPEST Tic 4.1X NFPA

High Resolution Thermal imaging camera



## Efficient and small = 1 button + 4" display

Particularly suitable for the first attack. LEADER TIC 4.1X offers unbeatable value and best quality, ideal for firefighting, first attack, search for missing persons and fire...



### Outstanding features:

- Compact 7.09 x 6.02 x 4.13 inches
- Lightweight 2.25 lbs with 2 batteries.
- Large 4" display for detailed visibility
- Widest detection range: -40°F to +2100°C
- 1 colorization mode
- Video recording (option)
- Batteries: 6 year warranty, 5000 charging cycles
- Safe batteries (LiFePO4): for high temp operations
- Up to 8h running time (2 batteries) with integrated Eco-Boost-System
- Germanium window to protect the optics
- Removable Pistol grip option
- Boot time: less than 5 sec
- 1 Large button: easy to operate even with gloves

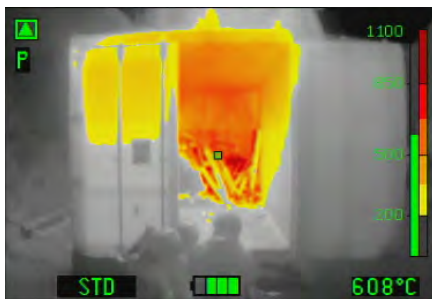


NFPA 1801:2018



### Color schemes:

TEMPEST TIC 4.1X offers one color scheme: Fire (standard).



**FIRE (STD):**  
 Dark Red >1560°F  
 Red > 1250°F  
 Orange > 930°F  
 Dark Yellow >660°F  
 Yellow > 400°F  
 White = Hot  
 Black = Cold

### 3 Sensitivity modes with automatic switch according observed scene:

- High sensitivity temperature range: -40 +300°F
- Medium sensitivity temperature range: -40 + 950°F
- Low sensitivity temperature range: -40 +2100°F



As part of our policy of constantly researching to improve our equipment, we reserve the right to change the characteristics of our apparatus at any time without prior notice. ZF.07.345.US.2

# TEMPEST

1.800.561.8187

www.itm.com

information@itm.com

# Characteristics:

Leader TIC 4.1X with Eco-Boost-System	
<b>Dimensions (approx)</b>	L7.09 x W6.02 x H4.13 inches (H = +4.33" with optional pistol grip)
<b>Weight</b>	2.25 lbs with 2 batt / 2.06 lbs with 1 batt (+0.37 lbs with optional pistol grip)
<b>Display</b>	4" LCD / 320 x 240 (76.800) px / Backlighted / Brightness: 800 cd/m <sup>2</sup>
<b>Frequency</b>	60Hz Fps
<b>T°C Range</b>	-40° to +2100°F
<b>Colorization</b>	Std: Fire
Housing	
<b>Material</b>	PUR / Elastomer housing with silicone boot around display
<b>Drop Test</b>	6.5ft on concrete
<b>IP</b>	IP67 / 3.2ft Meter 30 Minutes
<b>Heat resistance</b>	300°F for 15min / 500°F for 5min
Sensor	
<b>Micro bolometer type</b>	Uncooled 17μ Amorphous Silicon aSi Resolution <b>384 x 288</b> (110 592 px)
<b>Spectral range</b>	7 – 14 μm
<b>Thermal sensitivity</b>	NETD: <50mK (<0.05°C)
Optics	
<b>Material</b>	Germanium Carbon Coated Protected by a germanium window
<b>Focus</b>	1.15ft to infinity / F/1.3 speed
<b>Visual field / FOV</b>	H: 51° / V: 40° / Diagonal: 65°

General	
<b>Rechargeable batteries</b>	LiFePO <sub>4</sub> (Lithium Iron Phosphate = safety VS fire), 2.5Ah at 6.6V, 0.19lbs
<b>Running time</b> (20°C) with Eco-Boost-System since October 2018	<b>Without video/photo functions:</b> >8h (2 batt) / >4h (1 batt) <b>With video/photo functions:</b> >6h (2 batt) with non-active video >5h (2 batt) with recording video
<b>Boot time</b>	< 5 seconds
<b>Charging voltage</b>	12-24 VDC or 100-240 VAC
<b>Charging time</b> (for 2 batt / half for 1 batt)	Charging bay: ~1h30 Mains charger: 100% in ~2h, 90% in ~1h30, 80% in ~1h20
<b>Charging cycles</b>	> 5000
<b>Memory (optional)</b>	8GB internal SD card (8h video)
<b>Warranty</b>	<b>5 years</b> on camera / <b>6 years</b> on batteries / <b>10 years</b> on thermal sensor / <b>1 year</b> on accessories (chargers, charging bay, etc...)
<b>Certifications</b>	NFPA1801:2018 and ISA12.12.01 / CSA C22.2 N°213 and CE
Options	
Removable pistol grip	Automatic video recording (8GB capacity) at start ON
Neck strap in flame retardant material	Vehicle charging bay or mains charger
1 or 2 Retractable lanyards	Carrying case IP67
Protection hood	Wireless video transmission to computer, tablet or smartphone



## Energy concept

LiFePO<sub>4</sub> batteries (lithium-iron-phosphate).

### Benefits:

- Very long lifespan guaranteed 5000 charging cycles (~10 years)
- Operating time (up to 8h with 2 batteries at the same time in the camera)

## Picture capture & Video recording

Pictures (up to 1000) and Video (up to 8h) can be:

- Viewed on the camera screen during operation
- Live Pictures can be sent to a computer, tablet or smartphone thanks to optional wireless stick.
- Downloaded into a computer via a USB cable



### Vehicle Charging Bay

Very space-saving mountable!  
Power supply 12/24 VDC or 100-240 VAC. Can charge up to 4 batteries at the same time (2 in the camera and 2 spares)



## Camera standard features:

Designation	Color modes		Features					
	Color modes	Max color modes	Battery	Freeze mode	Side trap	Video recording	Picture capture	USB cable
LEADER TIC 4.1X (1CS)	Fire (std.)		2		No, but available attachment points for zippers and/or neck strap			
LEADER TIC 4.1X (V)	Fire (std.)		2			Automatic recording at start ON		√

P = Picture  
V = Video + Picture

## Camera optional accessories:

	<b>Wireless Transmission kit</b>	Only compatible with cameras equipped with Video recording		<b>Vehicle charging bay with additional slots</b>	Charge batteries in the camera + 2 extra spare batteries
	<b>Pack of 2 spare batteries</b>			<b>Power supply for charging bay</b>	Exist in 12/24V and 100V-240V with US or EU plug
	<b>Cable charger</b>	Available in 12/24V or 100V- 240V		<b>Retractable lanyard</b>	1.1 lbs or 2.2 lbs tension force
	<b>Watertight Carrying case</b>	IP67		<b>Neck strap</b>	Fire-proof (Kevlar)
	<b>Vehicle charging bay</b>	Charge batteries inside the camera		<b>Protection hood</b>	Increases time exposure x2 to high temperatures
				<b>Removable pistol grip</b>	Pistol grip = 0.37 lbs Incl. mounting tool

As part of our policy of constantly researching to improve our equipment, we reserve the right to change the characteristics of our apparatus at any time without prior notice.