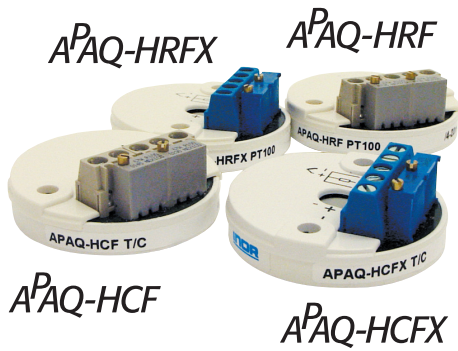


APAQ-H

Analog Adjustable 2-wire Transmitters



APAQ-H is a family of multirange 2-wire temperature transmitters for Pt100 or Thermocouple input. Designed for highest reliability and excellent industrial performance. The "low profile" housing is extremely durable and facilitates easy connections and adjustments.

- Rangeable with solderpads and potentiometers
- Temperature linear output for Pt100 (APAQ-HRF/-HRFX)
- mV linear output for T/C (APAQ-HCF/-HCFX)
- Consistent sensor break function
- Easy wiring, large center hole
- Moulded electronics for high protection

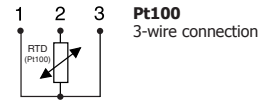
Specifications:

	APAQ-HRF/-HRFX	APAQ-HCF/-HCFX
Input	Pt100 ¹⁾ , 3-wire connection	T/C J, L, T, K, N
Adjustments		
Span	50/100/150/200/300/400/500°C	10 to 50 mV continuously
	100/200/300/400/600/800/1000°F	Temperature ranges acc to datasheet
Fine adjustment	±10%	±10%
Zero	-50 to + 50°C	±10% of span
	-60 to + 120°F	
Output	4-20 mA	4-20 mA
Linearization	Temperature linear output	mV linear output
Galvanic isolation	No	No
Power supply		
APAQ-HRF/-HCF	6.5 to 32 VDC	6.5 to 32 VDC
APAQ-HRFX/-HCFX	8.5 to 30 VDC	8.5 to 30 VDC
Sensor failure	Upscale, Downscale	Upscale, Downscale
Intrinsic safety		
APAQ-HRFX/-HCFX ATEX:	II 1 G EEx ia IIB T4-T6	II 1 G EEx ia IIB T4-T6
APAQ-HRFX/-HCFX FM:	IS Class I, DIV 1, GP A-D	IS Class I, DIV 1, GP A-D
APAQ-HRFX/-HCFX CSA:	Class I, Groups A-D	Class I, Groups A-D
Operating Temperature	-40 to 85°C / -40 to + 185°F	-40 to 85°C / -40 to + 185°F
Typical accuracy	±0.15% of temperature span	±0.5% to ±1.0% of temperature span
Connection head	DIN B or larger	DIN B or larger

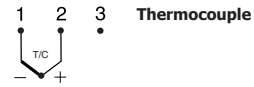
¹⁾IEC 60751, $\alpha=0.00385$

Input connections

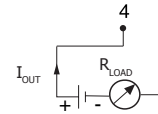
APAQ-HRF/-HRFX



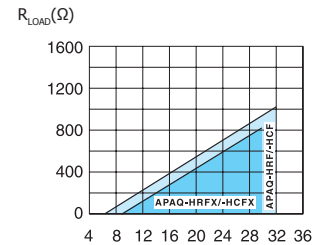
APAQ-HCF/-HCFX



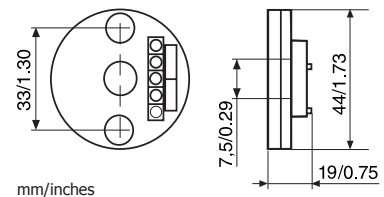
Output connections



Output load diagram



Dimensions



Ordering information

APAQ-HRF	70APHRF001
APAQ-HRFX (ATEX)	70APHRFX01
APAQ-HRFX (FM, CSA)	70APHRFX11
APAQ-HCF	70APHCF001
APAQ-HCFX (ATEX)	70APHCFX01
APAQ-HCFX (FM, CSA)	70APHCFX11
Configuration	70CAL00001