
LIGHTWEIGHT & HEAVY DUTY KNEE PAD SLEEVES

All day protection. All day comfort.



Lightweight
flexible EVA pad
contours leg shape
for seamless fit



Heavy duty
triple layer protection
with interior neoprene
foam padding for
all-day comfort



1.800.561.8187

www.**itm**.com

information@itm.com

KNEE PAD PROTECTION

The Lightweight and Heavy Duty Knee Pad Sleeves from Klein Tools feature a compact design for all day comfort and protection. This unique design keeps the knee pads close to your body and centered in place throughout the day for agility when working in tight spaces. These sleeves have a lightweight, breathable mesh back to keep you cool and comfortable.

Can be worn under or over pants



Second-skin fit allows for agility when in tight spaces



Elastic cuff with slip-resistant silicone helps knee pads stay in place

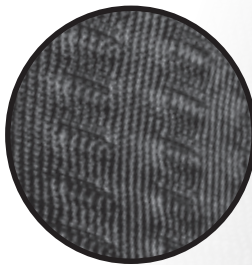


60511 & 60611

Interior neoprene foam padding for all-day comfort

Ergonomically engineered flexible padding with anti-abrasion layer contours to leg shape

Breathable mesh back keeps you cool and comfortable



**TRIPLE
LAYER
PROTECTION**



60492 & 60592

Flexible EVA knee pad contours to leg shape

For Professionals
SINCE 1857™



1.800.561.8187

Cat. No.	UPC 0-92644+	Description	Size	Thigh Measurement	Calf Measurement
				Measure 6" above center of kneecap	Measure below the center of the kneecap: Lightweight 6" & Heavy Duty 8"
60492	60492-8	Lightweight Knee Pad Sleeves	M/L	20-21.5" (50.5-54.5 cm)	14.5-16.5" (37-42 cm)
60592	60592-5	Lightweight Knee Pad Sleeves	L/XL	20.5-23.5" (51.5-60 cm)	15.5-17.5" (39-44.5 cm)
60511	60511-6	Heavy Duty Knee Pad Sleeves	M/L	20-21.5" (50.5-54.5 cm)	13.5-15.5" (34.5-39.5 cm)
60611	60611-3	Heavy Duty Knee Pad Sleeves	L/XL	20.5-23.5" (51.5-60 cm)	15-17.5" (38.5-44 cm)

www.itm.com

information@itm.com