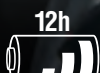


INTRINSICALLY SAFE LED HEADLAMP

Designed for hazardous environments



**KLEIN
TOOLS**



1.800.561.8187

www.**itm**.com

information@itm.com

Standards tested:

UL 913 7th Edition (US and Canada)
CSA 22.2 No.157-92, Reaffirmed 2012
CLASS I, DIV 1&2, GRP ABCD
CLASS II, DIV 1&2, GRP EFG
CLASS III
TEMP CODE: T4

Read included instructions and warnings for details.
Consult your safety supervisor to ensure this product
is suitable for conditions of the job site prior to use.

INTRINSICALLY SAFE LED HEADLAMP

This Intrinsically Safe Class I, II, & III / Division 1&2 Spot Headlamp is designed specially for hazardous locations-where explosion risk due to fine dust or vapors is high. This rugged headlamp is impact resistant, waterproof, and dust proof, making it ideal for a wide variety of demanding applications. Powered by 3 AAA batteries, this headlamp delivers up to 12 hours of run time and features two intuitive high/low modes. This intrinsically safe headlamp directly attaches on front or back accessory mounts exclusively on Klein Hard Hats and Safety Helmets –without a strap!

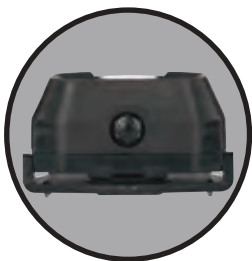
TWO MODES:
HIGH: 216 LUMENS
LOW: 75 LUMENS



**70° PIVOTING
ATTACHMENT BRACKET**



**PRESSURE RELIEF
VALVE (ON BOTTOM)**



**Pivoting Attachment
Bracket (on back)**



**Wide bracket with
pivot also allows
for table top use**

Attaches directly to Klein® Hard Hats and Safety Helmets
with Klein's exclusive patent-pending front & back mounts.
NO zip ties or strap needed!

**Large On/Off Power &
Hi/Low Button**

**IP67 rated,
waterproof and
dust proof**

**Impact
resistant
rugged
housing**



**Spotlight
LED**



**Uses 3x AAA
Alkaline Batteries
(included)**



**2.5 mm Hex Key (included) for
covered battery compartment screws**

For Professionals
SINCE 1857™



Cat. No.	UPC 0-92644+	Description	Batteries included
60156	60156-9	Intrinsically Safe LED Headlamp	3x AAA

**KLEIN
TOOLS**

1.800.561.8187

www.itm.com

information@itm.com