

# Quick Start Guide Handheld Particle Counter Model 3888 and 3889

For detail description, please refer to the user manual

## Include

- Main unit
- USB cable
- CD-ROM: USB driver, Remote software, User manual
- Li-ion battery x 2 (installed in the unit)
- Zero filter with tubing
- Inlet protective cap
- AC adaptor

## Functions

### DC jack

Supplies power with the provided AC adaptor

### Starts a measurement



### Stops a measurement



### Power/Home button

Turns the power ON/OFF  
To return to the Main screen in operation



### Inlet protective cap

Remove cap while the unit is operating

### Inlet

2.83L/min suction volume  
Outer diameter 6.4mm

### USB port (for PC)

Connects with your PC by using the USB cable

### USB port (for Printer & USB memory)

Connects with the printer by using the USB cable  
Allows you to copy the measurement results to the USB memory

### Change chart types

Switches the chart types:  
Bar → Circle → Table Σ

### Threaded tripod mount

Attaches instrument to the tripod

**Note:** Please do not cover or insert anything into the threaded exhaust port on back of the instrument



#### General setting

Opens the menus to set the unit, calendar, data, sound, language and to display instrument information



#### History

Views the historical data or measurements



#### Measurement setting

Opens the menu to set the mode, alarm, save, remote and temperature/humidity



#### Error

Tap the Error key to display an error description



#### Preset

Opens the menu to set or select up to 19 Presets

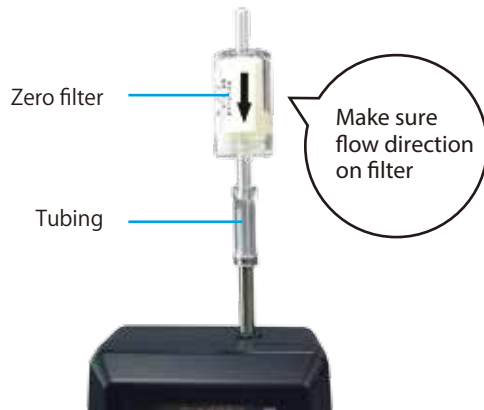


#### Differential Δ

Opens the Differential Δ display on the Main screen

## Purging

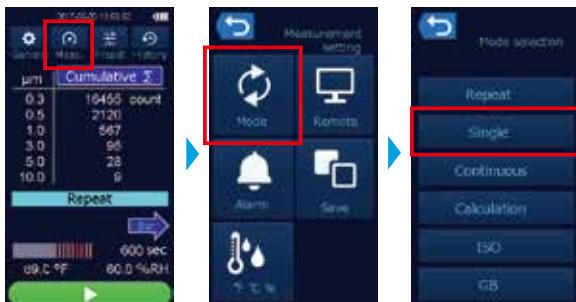
Prior to using the instrument in a clean environment such as cleanrooms, it is recommended to purge the instrument with the provided zero count filter.



- 1 Attach the provided zero count filter to the inlet
- 2 Turn the power on and press the Start button. Perform a continuous measurement for approximately 15 minutes until the measuring count value is suitable for 10 seconds or more.
- 3 After measurement, remove the zero count filter from the inlet

## Measurement

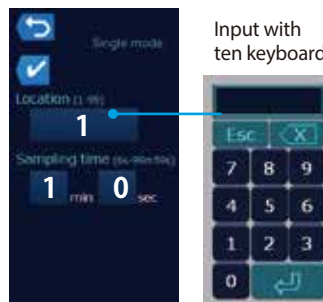
- 1 Select measurement mode



### Measurement modes

<b>Repeat</b>	Repeats the measurement of configured sampling time and cycle
<b>Single</b>	Performs a measurement of set sampling time only once
<b>Continuous</b>	Continues a measurement until pressing the Stop button
<b>Calculation</b>	Calculates the average, standard deviation, maximum, and minimum after measurements
<b>ISO</b>	Performs measurements in accordance with ISO 14644
<b>GB</b>	Performs measurements in accordance with Chinese National Standard

- 2 Set up location and sampling time



### Location

Sets measurement locations by number  
Ranges: from 1 to 99

### Sampling time

Sets the sampling time of 1 cycle  
Ranges: from 6 sec to 99 min 59 sec

- 3 Start measurement



① Go to main screen by pressing Home button

② Press start button to start measurement

\* Measurement starts after 10 seconds warm up time

## General Setting

Select  on the Main screen to set the unit, calendar, data, language, and sound



### Unit

Select one of the following 3 options of units to reflect to the readings displayed on the Main screen and Measurement results.



### Language

Selects a language from English, Japanese, Chinese, Spanish



### Calendar

Set the date and time



### Sound

Sets the operation sound ON/OFF



### Data

Confirms the information and perform operation on the entire measured data



### Information

Displays the instrument information  
Latest calibration date and firmware version