



Precision Performance
Hot Air Tools for Electronic Applications

1.800.561.8187

www.itm.com

information@itm.com

Electronics Industry Kits & Accessories

STEINEL has precision performance hot air tools for electronic applications and industries such as:

soldering & desoldering

printed circuit boards

medical devices

electronics

automotive

wire harnessing

composite layup

aerospace & defense

telecommunications

heavy equipment



Spreader Nozzle
50 mm
PN: 110048643



Pinpoint Reducer Nozzle
4 mm
PN: 110049668



Reflector Nozzle
14 mm
PN: 110048752



Reflector Nozzle
9 mm
PN: 110048646



Solder Sleeve Nozzle
35 x 20 mm
PN: 110039169



Sieve Nozzle
50 x 35 mm
PN: 110038724



Adapter Nozzle
Fits 2320 - 1920
PN: 110075799



Reflector Nozzle
39mm
PN: 110048645



Heat Gun Stand
Magnetic
PN: 110049589



Heat Gun Stand
Vacuum Cup
PN: 110049586



Electronics Kit
HG 2020 E
PN: 110051533



Platinum Kit
HL 2020 E
PN: 110051542



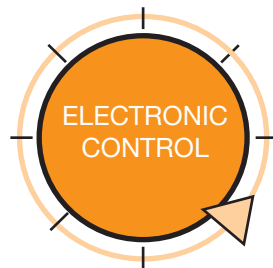
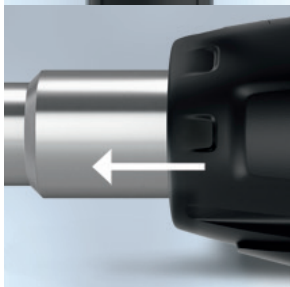
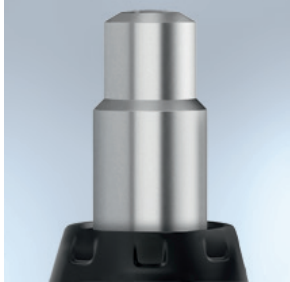
Platinum Kit
HL 1920 E
PN: 110051545



HL Guard Cage
Fits 2320 - 1820
PN: 110057833

Nothing but the BEST

HG 2520 E



KEY FEATURES

- LCD display with loc function
- 10,000 hour powerful brushless motor
- Safety heat indicator
- Hanger
- Plug-in heating element
- Ergonomic handle
- Power interrupt feature
- Changeable power cord
- On / Off switch
- Joystick programmable functions
- Non-slip standing surface
- Variable airflow

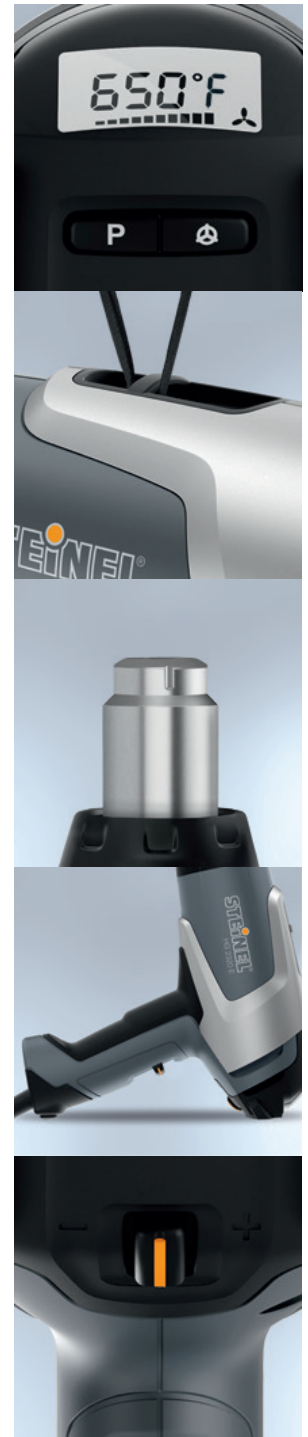
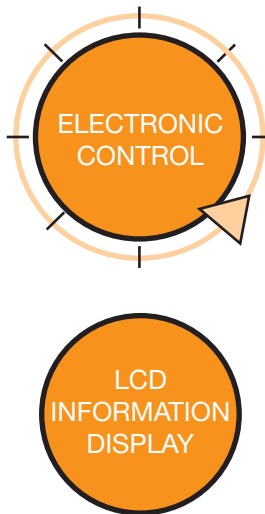
TECH SPECS

- 120 VAC, 60 Hz power supply
- 1750 W output
- 120 - 1300° F temperature range

PN: 110025599

BETTER than the rest

HG 2320 E



KEY FEATURES

- LCD display with loc function
- Brush motor
- Safety heat indicator
- Hanger
- Ergonomic handle with soft inlay
- Changeable power cord
- Variable airflow
- Joystick programmable functions
- Non-slip standing surface

TECH SPECS

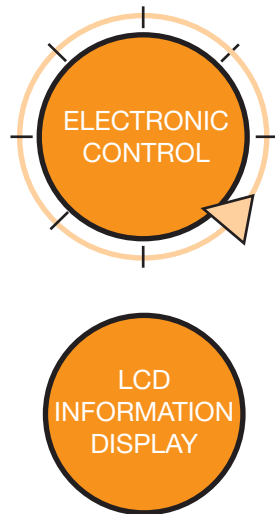
- 120 VAC, 60 Hz power supply
- 1600 W output
- 120 - 1200° F temperature range

PN: 110025598



BETTER than the rest

HG 2320 ESD



KEY FEATURES

- 3 prong grounded plug
- LCD display with loc function
- Brush motor
- Safety heat indicator
- Hanger
- Ergonomic handle with soft inlay
- Changeable power cord
- Variable airflow
- Joystick programmable functions
- Non-slip standing surface

TECH SPECS

- 120 VAC, 60 Hz power supply
- 1600 W output
- 120 - 1200° F temperature range



PN: 110073503

BETTER than the rest

HL 2020 E



KEY FEATURES

- LCD display with new functions
- Brush motor
- Safety heat indicator
- Hanger
- Ergonomic handle with soft inlay
- Changeable power cord
- 3-stage airflow
- Ceramic encapsulated heating element
- Non-slip standing surface
- Heat accumulation warning
- Thermal cut-out, overheat control

TECH SPECS

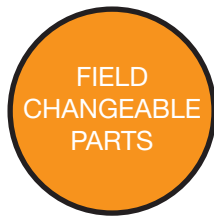
- 120 VAC, 60 Hz power supply
- 1600 W output
- 120 - 1150° F temperature range

PN: 110025597



BETTER than the rest

HL 1920 E



KEY FEATURES

- Thumbwheel temperature setting
- Brush motor
- Hanger
- Ergonomic handle with soft inlay
- Changeable power cord
- 3-stage airflow
- Ceramic encapsulated heating element
- Non-slip standing surface
- Optimized center of gravity
- Thermal cut-out

TECH SPECS

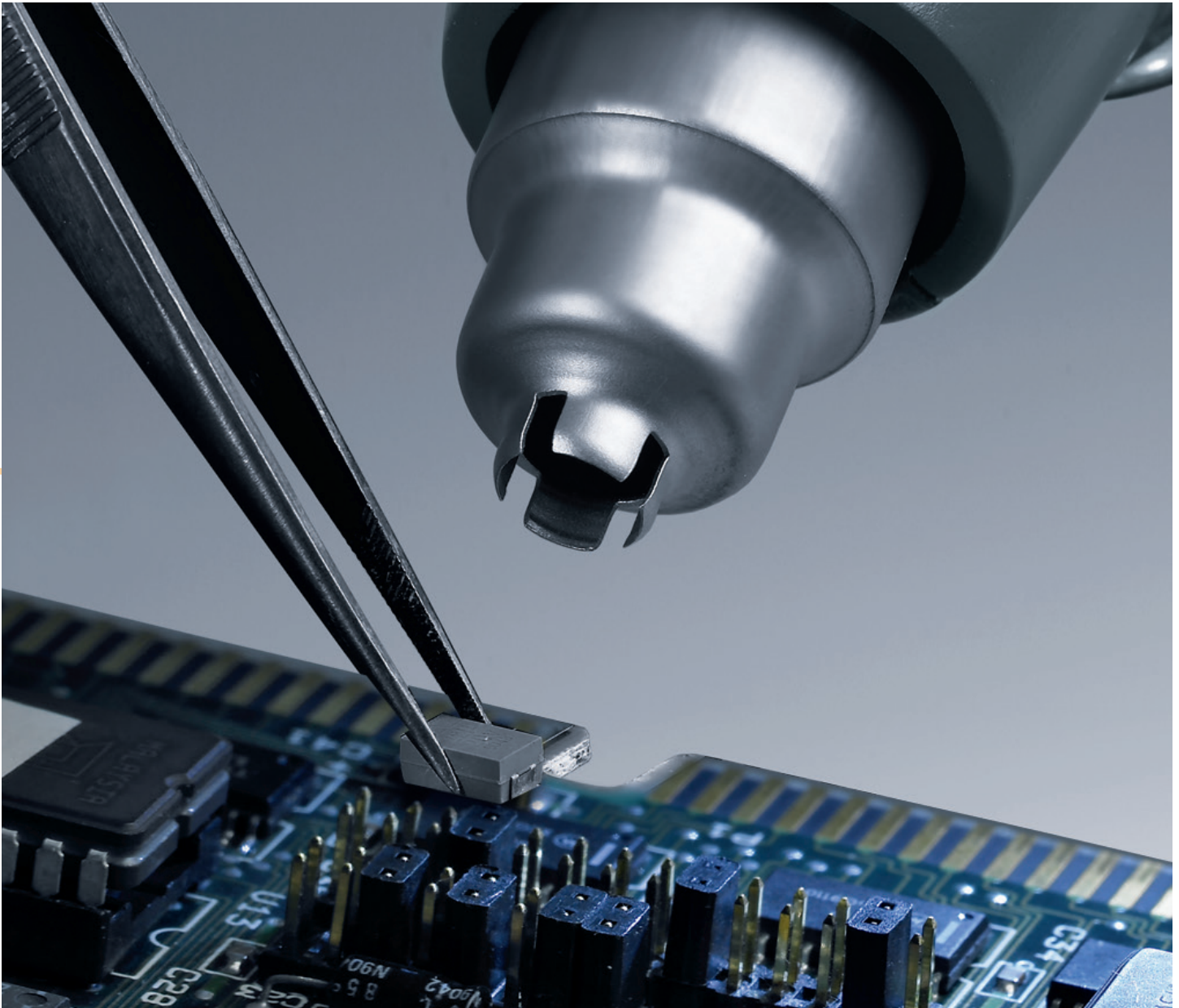
- 120 VAC, 60 Hz power supply
- 1500 W output
- 120 - 1100° F temperature range

PN: 110025596



GOOD Quality

HG 1820



KEY FEATURES

- Brush motor
- Hanger
- Ergonomic handle with soft inlay
- Changeable power cord
- 3-stage airflow
- Ceramic encapsulated heating element
- Non-slip standing surface
- Optimized center of gravity
- Thermal cut-out

TECH SPECS

- 120 VAC, 60 Hz power supply
- 1400 W output
- 120 / 750 / 1100° F, 3 temperature options

PN: 110025541



1.800.561.8187

www.itm.com

information@itm.com

GOOD Quality

HG 1620 E



KEY FEATURES

- Dual temperature options
- Brush motor
- Changeable power cord
- 2-stage airflow
- Ceramic encapsulated heating element

TECH SPECS

- 120 VAC, 60 Hz power supply
- 1300 W output
- 575 / 950° F, 2 temperature options



PN: 110023455



NEW Possibilities

Mobile Heat 5



IDEAL
FOR
FIELD
REPAIRS

KEY FEATURES

- Flexible setting options
- LCD display
- 4 preset application specific applications
- Safety start button
- LED illumination on base of tool
- Compatible with all push-on nozzles
- Rechargeable

TECH SPECS

- 18 volts power supply
- 900 - 1000 W output
- 120 - 930° F temperature range

ADDITIONAL
BATTERIES
AVAILABLE

ASK ABOUT
MOBILE HEAT
KITS

PN: 110080698

1.800.561.8187

www.itm.com

information@itm.com

NEW Possibilities

Mobile Heat 3



KEY FEATURES

- Dual temperature options
- Safety start button
- LED illumination on base of tool
- Compatible with all push-on nozzles
- Rechargeable

TECH SPECS

- 18 volts power supply
- 600 W output
- 570 or 930° F, 2 temperature options

PN: 110080696